

# 1201 Tennessee Abaca

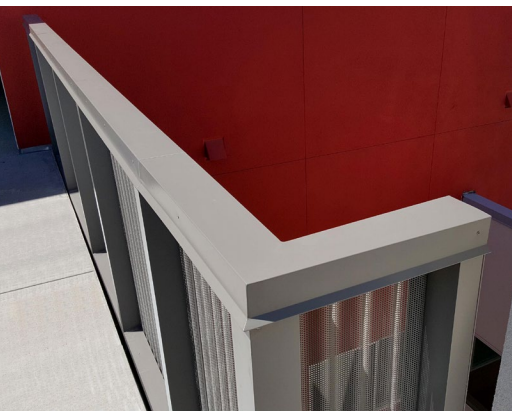
## Apartment Building

**Project:** 1201 Tennessee Abaca  
**Architect:** Fougeron Architecture  
**Completion:** June 2017

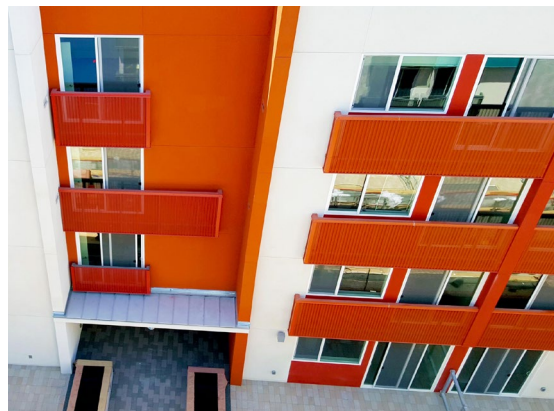
**Location:** San Francisco, CA  
**Contractor:** Devcon Construction

**Scope:**

In an industrial area formerly dedicated to ship building, San Franciscans now shop, dine and live. Inspired by the recent rejuvenation, the architects of the new Abaca Apartments chose to stand out from the neighboring warehouses with a bold design – and colorful railings to complete the look. The building features a modern and sleek architectural design, with a combination of glass, steel, and other contemporary materials. Sightline added more than 3,100 LF of railing to the apartment building. Custom Sightline Commercial Solutions steel railing and corrugated aluminum panels were staggered and finished in an array of colors, adding brightness and whimsy to the exterior. The panels and trim were cut on site to perfectly fit each frame.



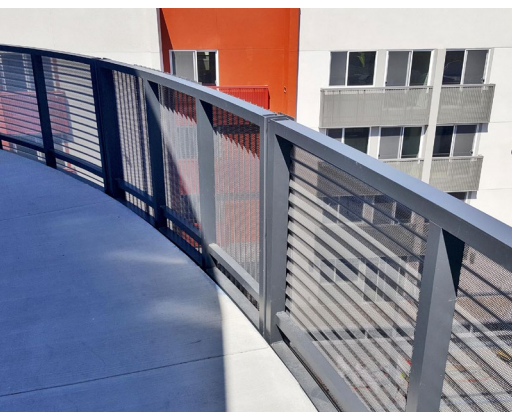
Custom aluminum frames with perforated screen panels and trim. The panels and trim were cut on site to perfectly fit each frame.



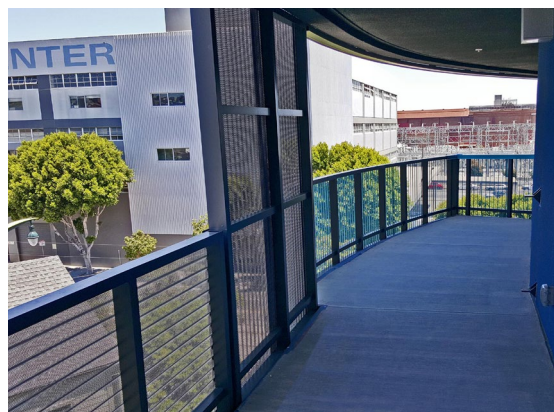
Railings and panels were painted on both sides in bright Kynar® colors, including Zinc, Gray, Blue, Green, Red, and Clay.



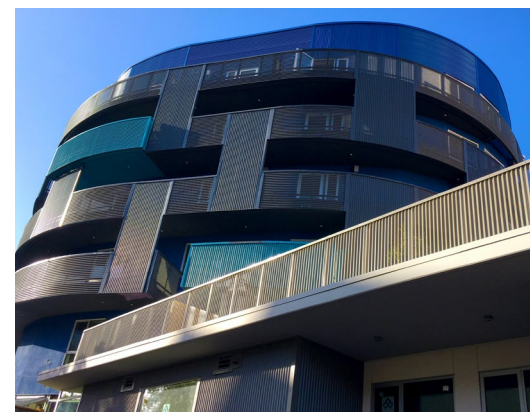
All of the railing was installed off of scaffolding.



Trim was curved to the same radius as the railing. Custom jigs were created to fabricate the coping in-house.



Abaca's uniquely designed panels and railing stand in stark contrast to the neighboring architecture.



Sightline's work is incorporated throughout the building's exterior, which includes more than 3,100 LF of railing.

We elevate places where experiences happen by providing innovative engineering, fabrication, and installation solutions to the most complex challenges. Discover our unconventional approach.