

## Basketball Arena

**Project:** Joyce Center  
**Architect:** Crawford Architects

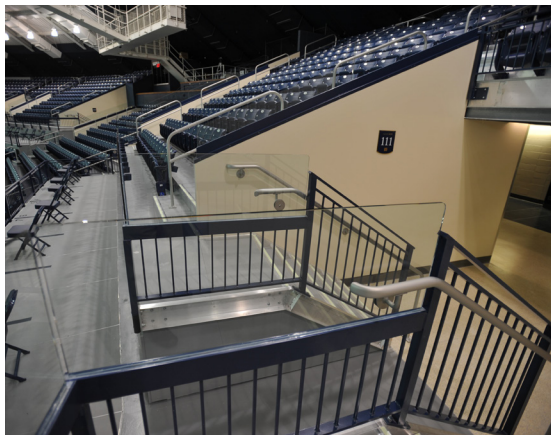
**Location:** South Bend, IN  
**Completion:** August 2016

**Scope:**

The University of Notre Dame enlisted Sightline Commercial Solutions to modernize an aging facility with a deteriorating telescopic seating system. Their task involved developing, designing, fabricating, and installing a brand-new permanent grandstand seating riser system within the upper level of the Purcell Pavilion at the Joyce Center. This transformation converted a previously temporary rolling seating unit into a top-tier seating arrangement. It consisted of eighteen sections of spanning beams, support steel, and formed riser panels, creating a distinctive and enduring venue for the Fighting Irish. The project encompassed 27,000 square feet of grandstand seating area, which included stair units, 12 ADA infill seating sections, aisle railings, and 7,500 linear feet of architectural glass and aluminum railings. The grandstand's framework was constructed with formed metal risers, allowing for extended distances between columns and enabling the use of riser-mounted chairs to reduce maintenance requirements after events.



Stair units were included to allow fans to safely travel between floors.



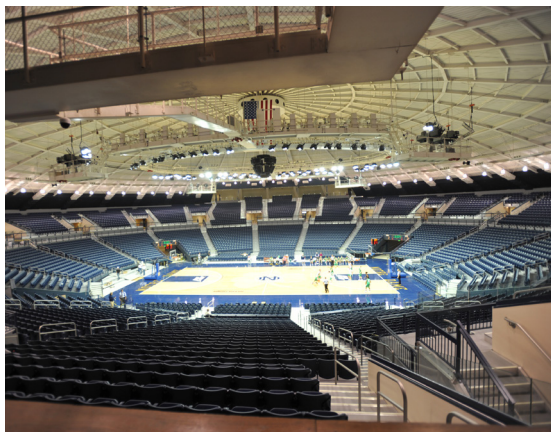
Sightline designed and installed 12 ADA infill seating sections throughout the arena.



The project encompassed 27,000 square feet of grandstand seating area.



Structural raker beams provide usable walkways below the seating systems.



Eighteen sections of spanning beams, support steel, and formed riser panels.



7,500 linear feet of architectural glass and aluminum railings were installed by our team.

We elevate places where experiences happen by providing innovative engineering, fabrication, and installation solutions to the most complex challenges. Discover our unconventional approach.