

JW Marriott - Mall of America

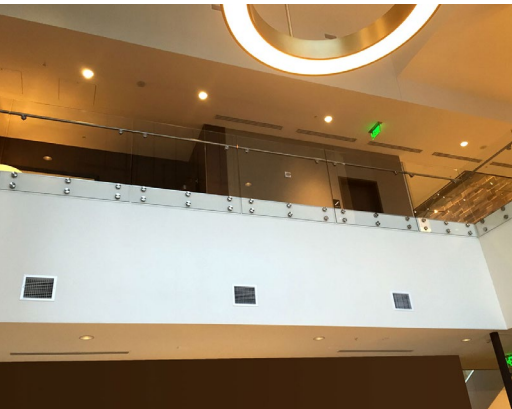
Hotel

Project: JW Marriott
Architect: DLR Group
Partners: OldCastle

Location: Bloomington, MN
Contractor: W.L. Hall Company
Completion: December 2015

Scope:

The JW Marriott, a luxury hotel connected to the Mall of America in Minneapolis, provides guests with convenient access to over 500 retail stores, restaurants, and entertainment options located inside Mall of America. The hotel features spacious, elegantly designed rooms and suites with modern amenities. Sightline Commercial Solutions provided fascia mounted Point Series and Track Rail base shoe glass railing systems to the grand lobby and balcony overlooks of the JW Marriott. Low iron 1/2" tempered glass was utilized throughout this project.



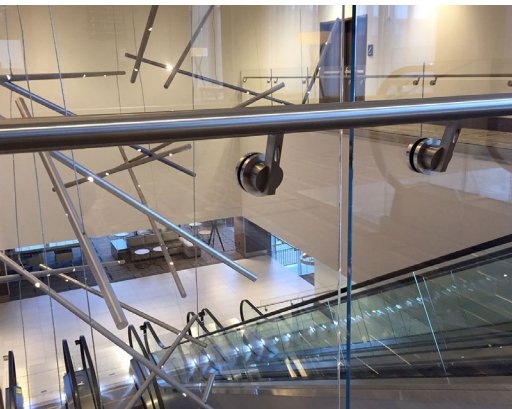
Point Series side mounted glass railing on balcony overlook.



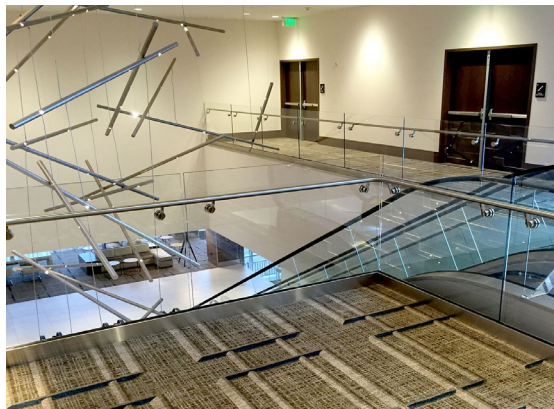
316 stainless steel handrail components.



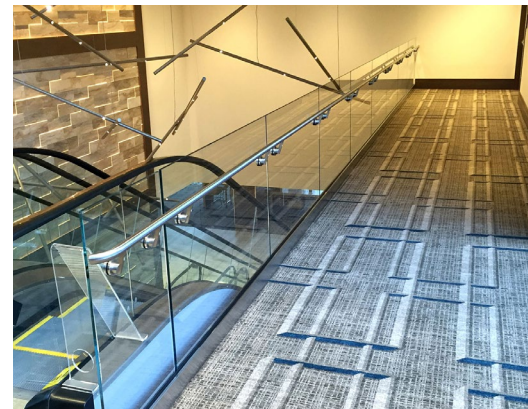
Point Series side mount with 36" high handrail.



316 stainless steel handrail components.



Top mounted base shoe railing system.



1/2" glass shoe anchored to the structural slab with 36" high stainless steel handrail.

We elevate places where experiences happen by providing innovative engineering, fabrication, and installation solutions to the most complex challenges. Discover our unconventional approach.