

FINISH: GALVANIZE



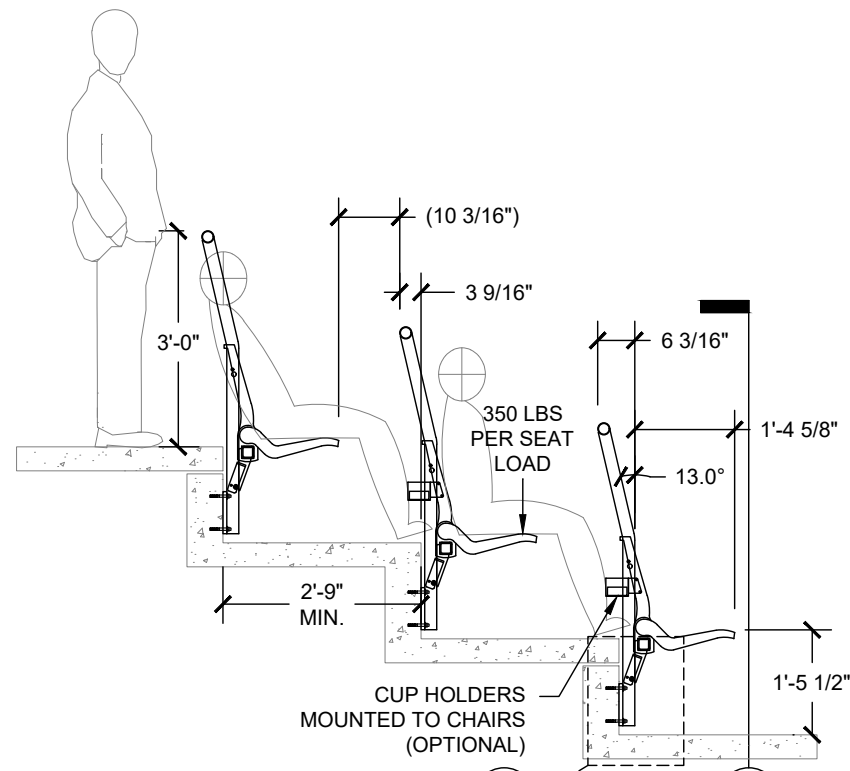
7008 NORTHLAND DR.
MINNEAPOLIS, MN 55428
PH: (763) 533-2094

THIS DRAWING IS THE PROPERTY OF
SIGHTLINE COMMERCIAL
SOLUTIONS, LLC. NEITHER THE
DRAWING NOR ITEMS THEREON ARE
TO BE REPRODUCED OR USED IN
ANY MANNER NOT AUTHORIZED BY
SIGHTLINE COMMERCIAL
SOLUTIONS, LLC. IN WRITING.

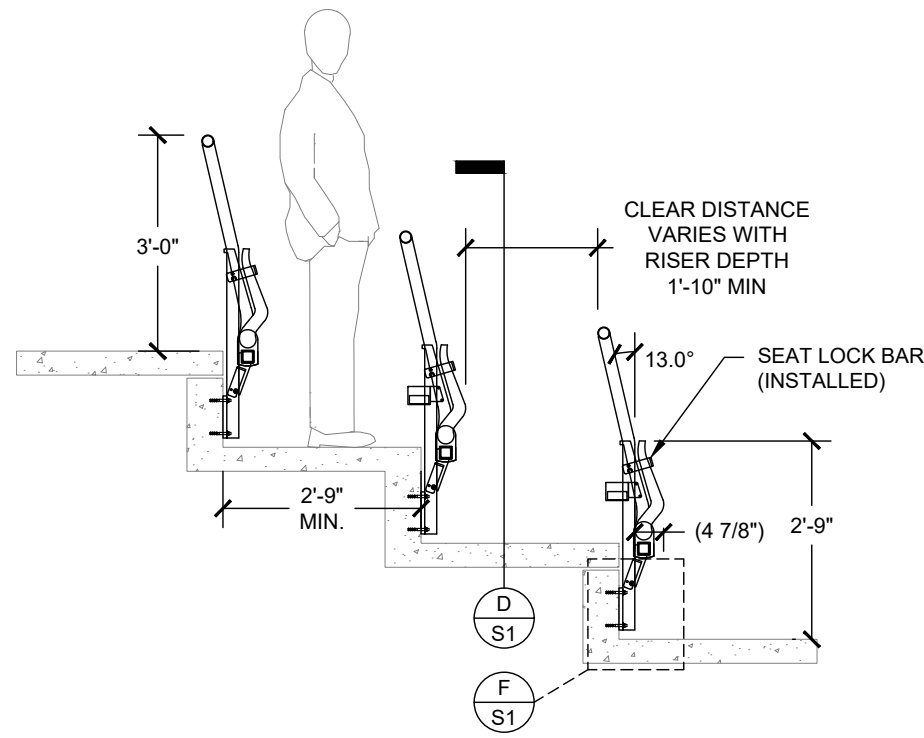
**PROJECT
INFORMATION**

PROJECT:
SEATING RAIL SALES DRAWING
LOCATION:
MINNEAPOLIS, MN

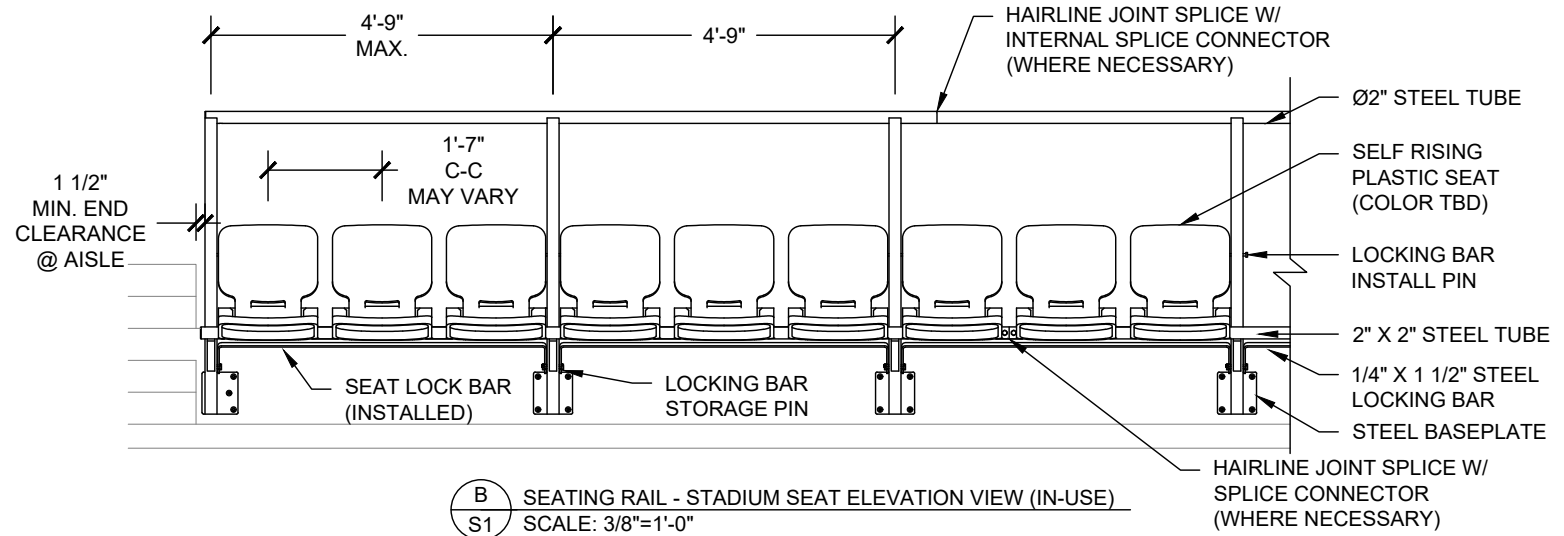
SEATING RAIL
STEEL RAIL WITH STADIUM SEAT DETAILS



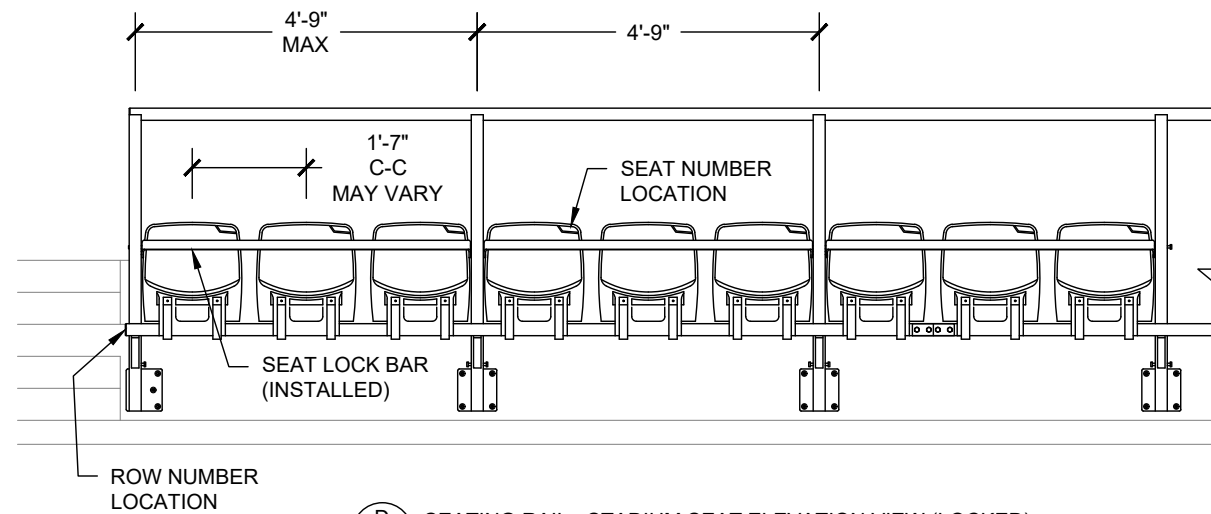
A SEATING RAIL - STADIUM SEAT SECTION VIEW (IN-USE)
S1 SCALE: 3/8"=1'-0"



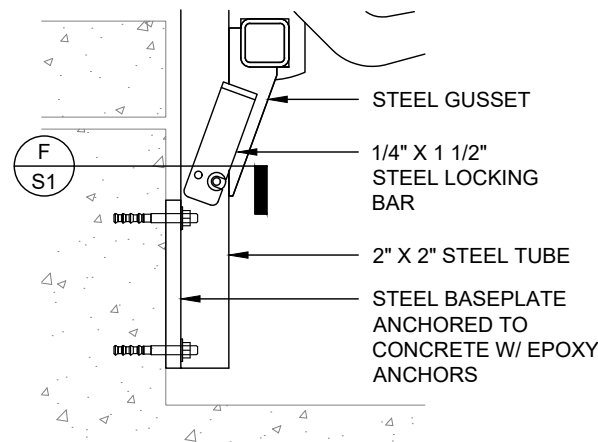
C SEATING RAIL - STADIUM SEAT SECTION VIEW (LOCKED)
S1 SCALE: 3/8"=1'-0"



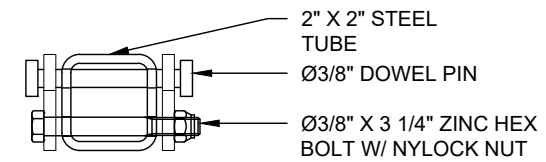
B SEATING RAIL - STADIUM SEAT ELEVATION VIEW (IN-USE)
S1 SCALE: 3/8"=1'-0"



D SEATING RAIL - STADIUM SEAT ELEVATION VIEW (LOCKED)
S1 SCALE: 3/8"=1'-0"



E BASEPLATE DETAIL
S1 SCALE: 1 1/2"=1'-0"



F LOCKING BAR DETAIL
S1 SCALE: 3"=1'-0"

ITEM	DESCRIPTION	AUTH	DATE

DRAWN BY NBB	DATE 3/27/20
PROJECT NUMBER SALES	
SHEET NUMBER SCS-SEATING-RAIL-S1	

FINISH: CLEAR ANODIZE



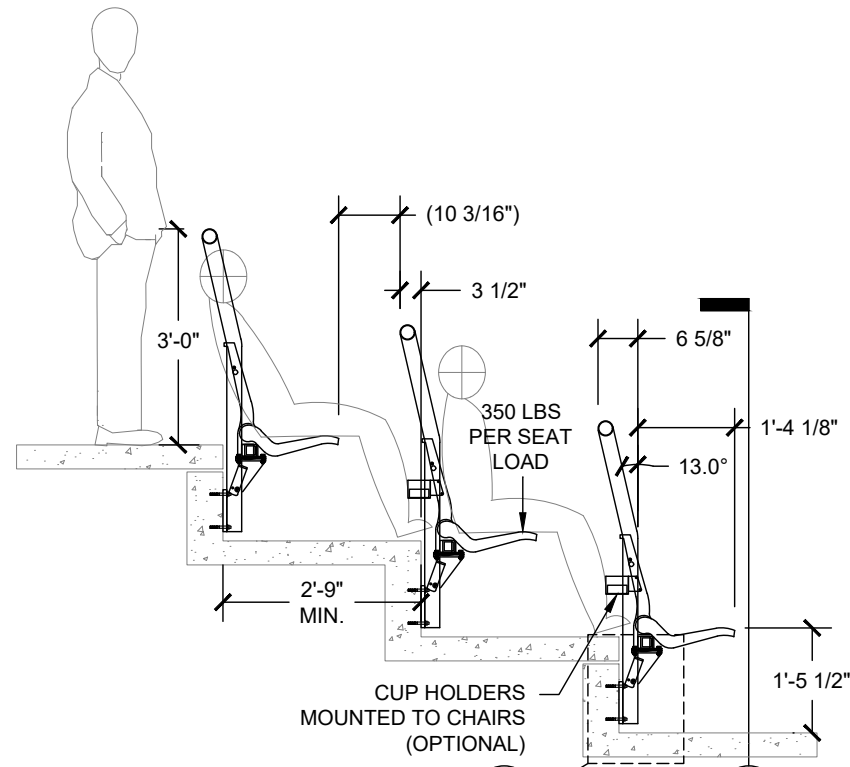
7008 NORTHLAND DR.
MINNEAPOLIS, MN 55428
PH: (763) 533-2094

THIS DRAWING IS THE PROPERTY OF
SIGHTLINE COMMERCIAL
SOLUTIONS, LLC. NEITHER THE
DRAWING NOR ITEMS THEREON ARE
TO BE REPRODUCED OR USED IN
ANY MANNER NOT AUTHORIZED BY
SIGHTLINE COMMERCIAL
SOLUTIONS, LLC. IN WRITING.

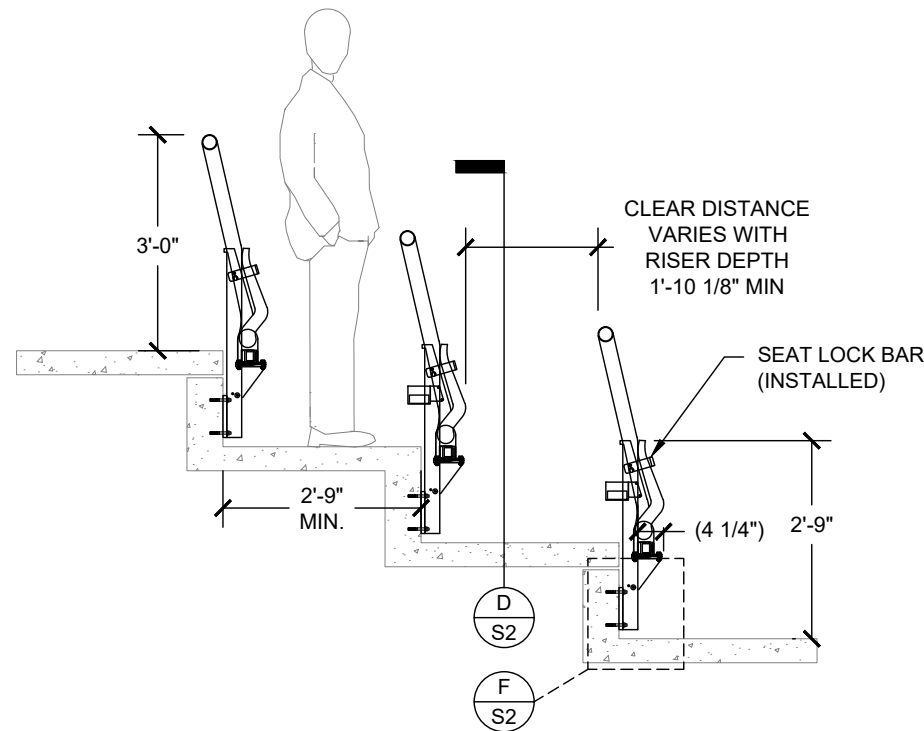
**PROJECT
INFORMATION**

PROJECT:
SEATING RAIL
SALES DRAWING
LOCATION:
MINNEAPOLIS, MN

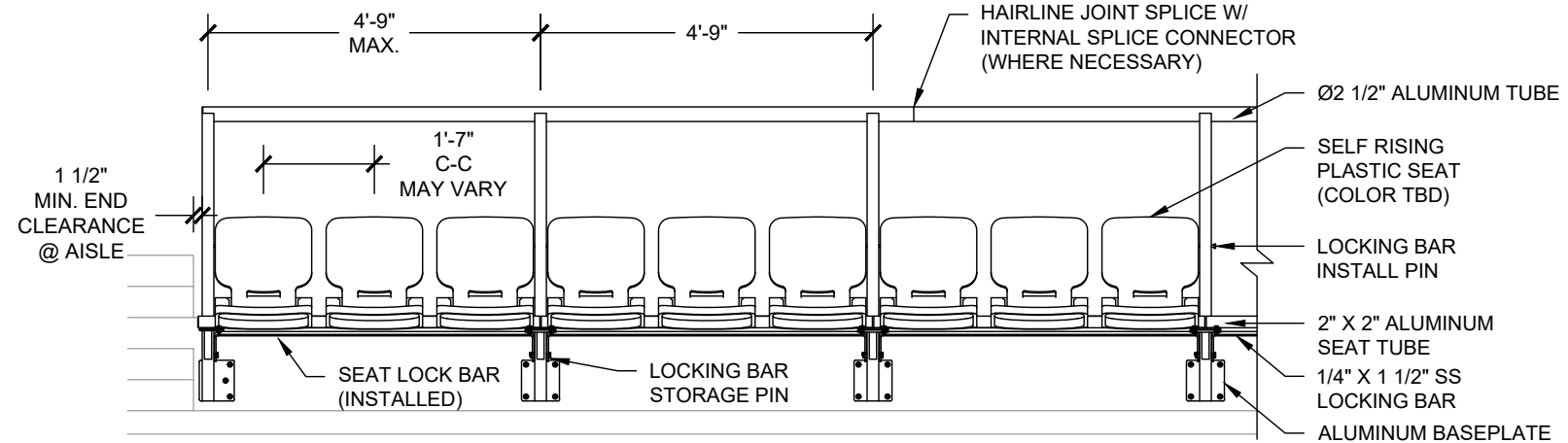
**SEATING RAIL
ALUMINUM RAIL WITH STADIUM SEAT DETAILS**



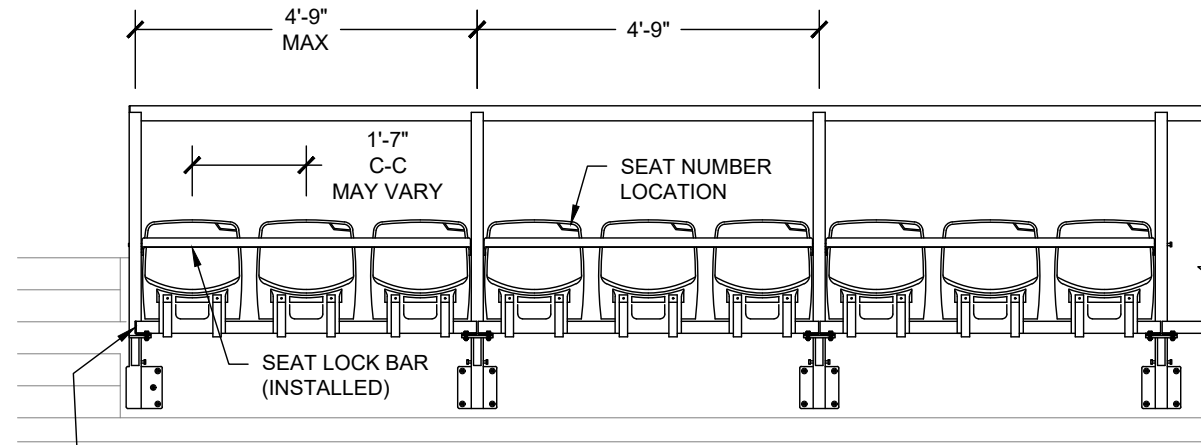
A SEATING RAIL - STADIUM SEAT SECTION VIEW (IN-USE)
S2 SCALE: 3/8"=1'-0"



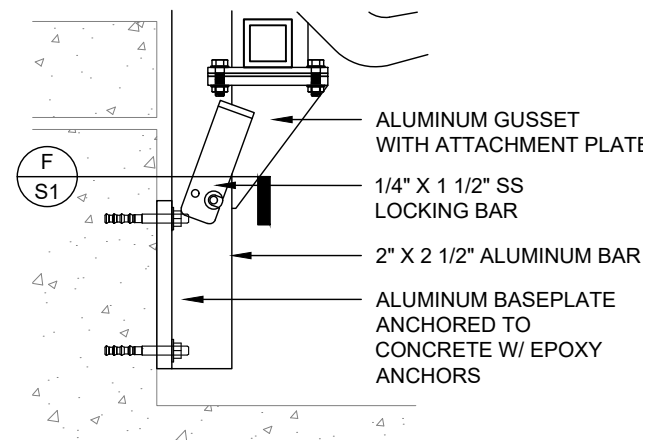
C SEATING RAIL - STADIUM SEAT SECTION VIEW (LOCKED)
S2 SCALE: 3/8"=1'-0"



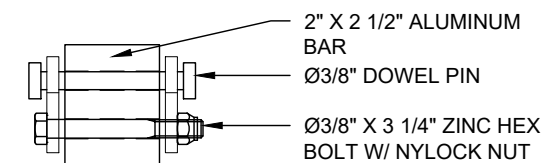
B SEATING RAIL - STADIUM SEAT ELEVATION VIEW (IN-USE)
S2 SCALE: 3/8"=1'-0"



D SEATING RAIL - STADIUM SEAT ELEVATION VIEW (LOCKED)
S2 SCALE: 3/8"=1'-0"



E BASEPLATE DETAIL
S2 SCALE: 1 1/2"=1'-0"



F LOCKING BAR DETAIL
S2 SCALE: 3"=1'-0"

ITEM	DESCRIPTION	AUTH	DATE

DRAWN BY NBB	DATE 3/27/20
PROJECT NUMBER SALES	
SHEET NUMBER SCS-SEATING-RAIL-S2	

RAIL FINISH: CLEAR ANODIZE
 STADIUM SEAT BRACKET FINISH: GALVANIZE
 BENCH SEAT FINISH: CLEAR ANODIZE

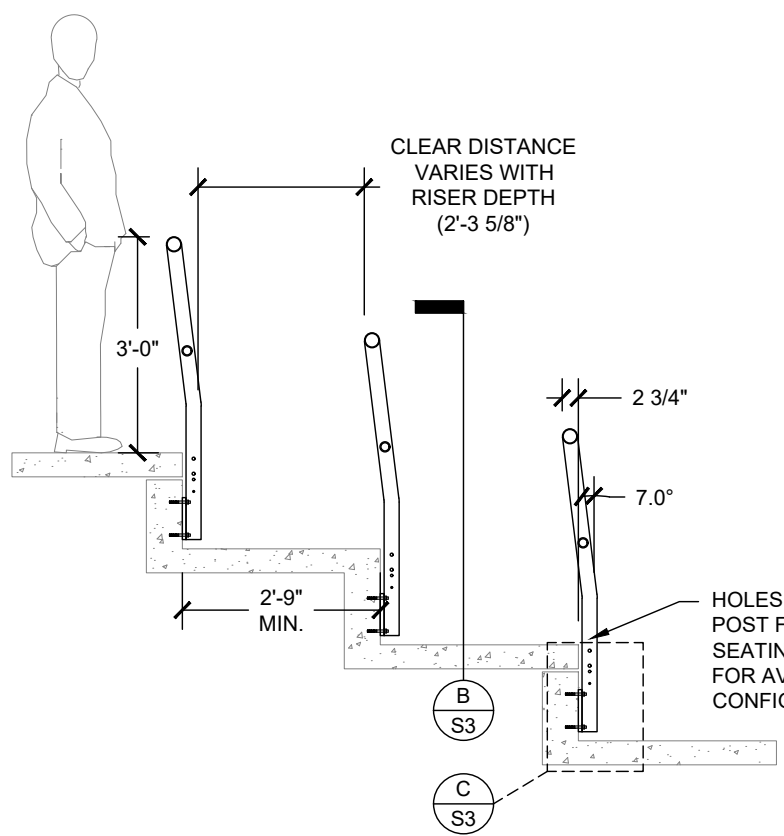


7008 NORTHLAND DR.
 MINNEAPOLIS, MN 55428
 PH: (763) 533-2094

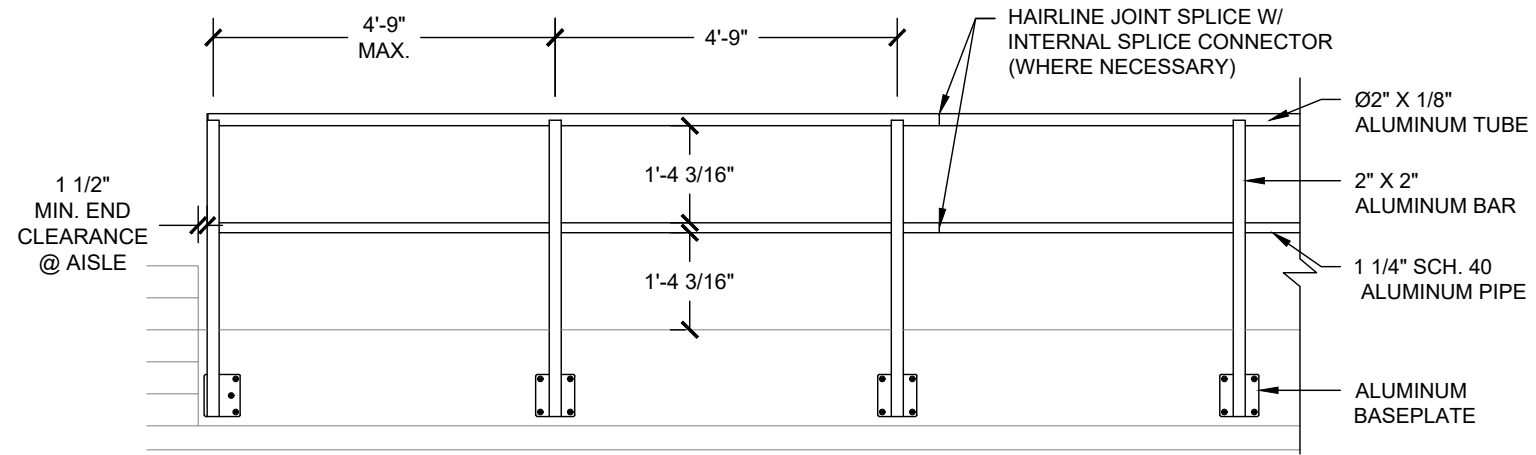
THIS DRAWING IS THE PROPERTY OF
 SIGHTLINE COMMERCIAL
 SOLUTIONS, LLC. NEITHER THE
 DRAWING NOR ITEMS THEREON ARE
 TO BE REPRODUCED OR USED IN
 ANY MANNER NOT AUTHORIZED BY
 SIGHTLINE COMMERCIAL
 SOLUTIONS, LLC. IN WRITING.

PROJECT INFORMATION

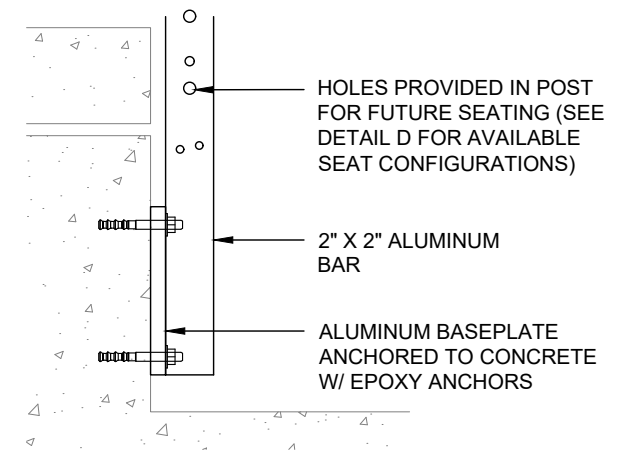
PROJECT:
 SEATING RAIL
 SALES DRAWING
 LOCATION:
 MINNEAPOLIS, MN



A SEATING RAIL - NO SEAT SECTION VIEW
 S3 SCALE: 3/8"=1'-0"

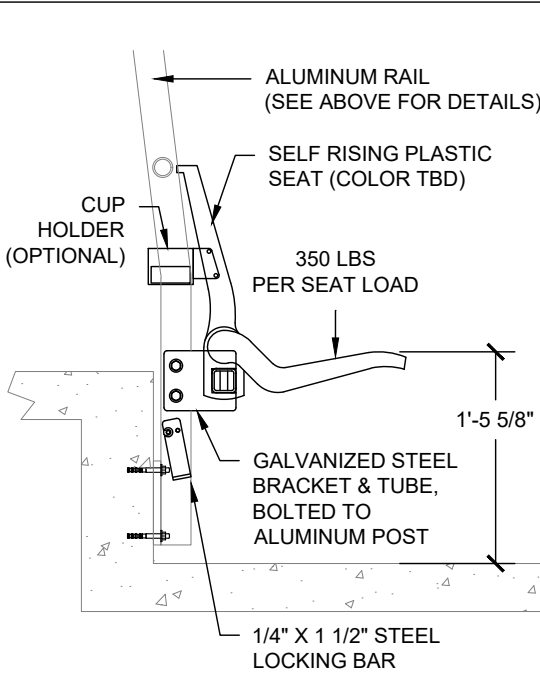


B SEATING RAIL - NO SEAT ELEVATION VIEW
 S3 SCALE: 3/8"=1'-0"

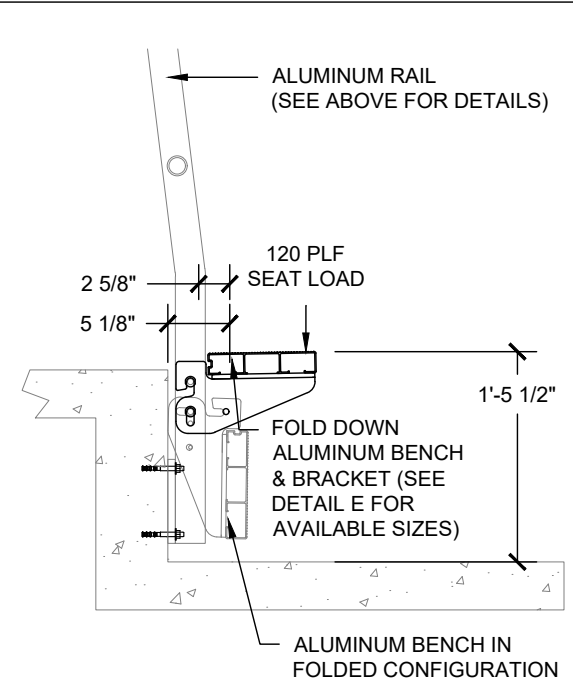


C TYP. BASEPLATE DETAIL
 S3 SCALE: 1 1/2"=1'-0"

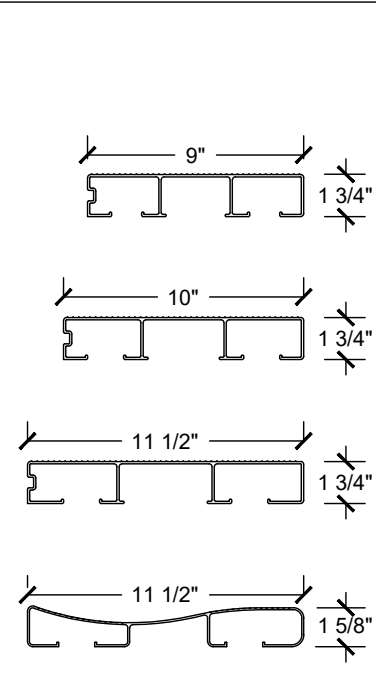
SEATING CONFIGURATIONS - FUTURE USE



D1 FUTURE STADIUM SEAT DETAIL
 S3 SCALE: 3/4"=1'-0"



D2 FUTURE BENCH SEAT DETAIL
 S3 SCALE: 3/4"=1'-0"



E AVAILABLE BENCH SIZES
 S3 SCALE: 1 1/2"=1'-0"

TABLE 3A - MAX BENCH SEATS* PER ROW (2'-9" STADIA TREAD)

BENCH SIZE	DUAL ACCESS AISLE	SINGLE ACCESS AISLE
9"	34 SEATS	17 SEATS
10"	30 SEATS	15 SEATS
11-1/2"	25 SEATS	12 SEATS

TABLE 3B - MAX BENCH SEATS* PER ROW (2'-10" STADIA TREAD)

BENCH SIZE	DUAL ACCESS AISLE	SINGLE ACCESS AISLE
9"	37 SEATS	18 SEATS
10"	34 SEATS	17 SEATS
11-1/2"	29 SEATS	14 SEATS

*BENCH SEAT SIZE = 1'-7" WIDE

SEATING RAIL
 ALUMINUM RAIL WITHOUT SEAT DETAILS

ITEM	DESCRIPTION	AUTH	DATE

DRAWN BY: NBB
 DATE: 3/27/20
 PROJECT NUMBER: SALES
 SHEET NUMBER: SCS-SEATING-RAIL-S3

FINISH: CLEAR ANODIZE

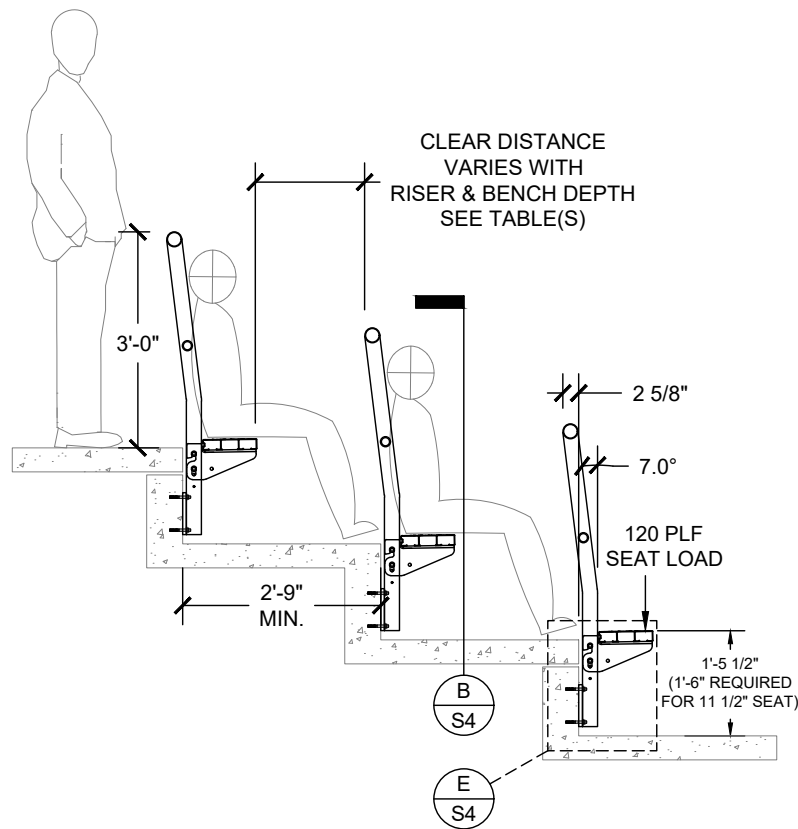


7008 NORTHLAND DR.
MINNEAPOLIS, MN 55428
PH: (763) 533-2094

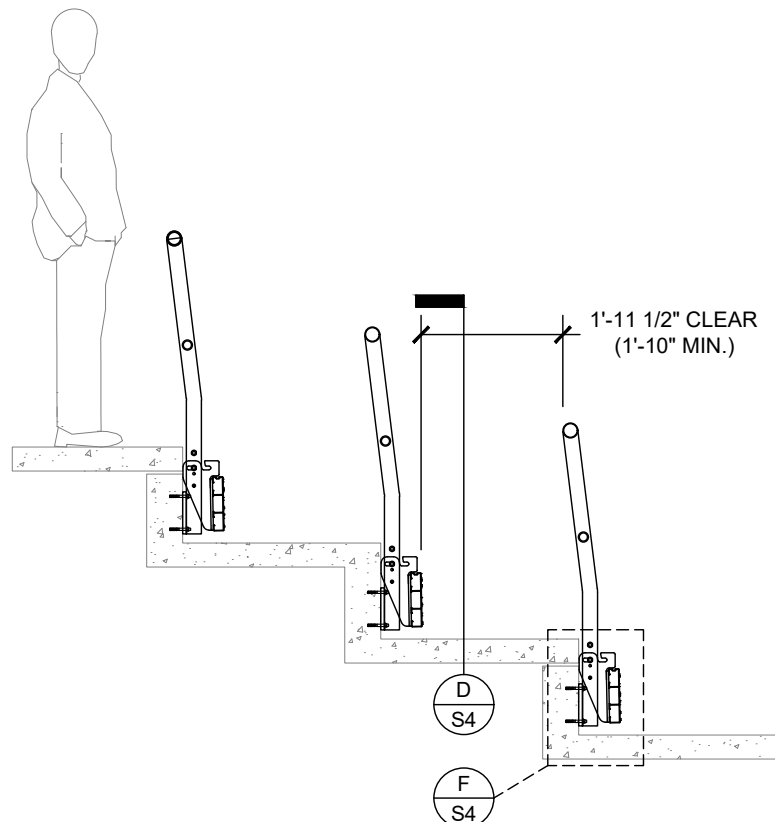
THIS DRAWING IS THE PROPERTY OF SIGHTLINE COMMERCIAL SOLUTIONS, LLC. NEITHER THE DRAWING NOR ITEMS THEREON ARE TO BE REPRODUCED OR USED IN ANY MANNER NOT AUTHORIZED BY SIGHTLINE COMMERCIAL SOLUTIONS, LLC. IN WRITING.

PROJECT INFORMATION

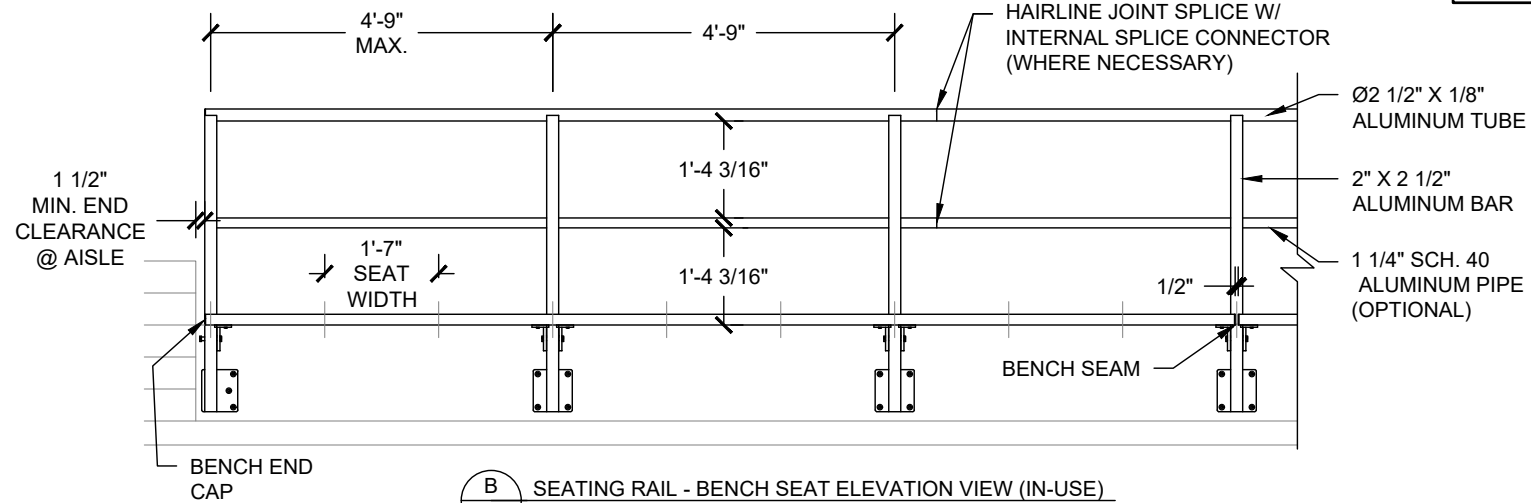
PROJECT:
SEATING RAIL
SALES DRAWING
LOCATION:
MINNEAPOLIS, MN



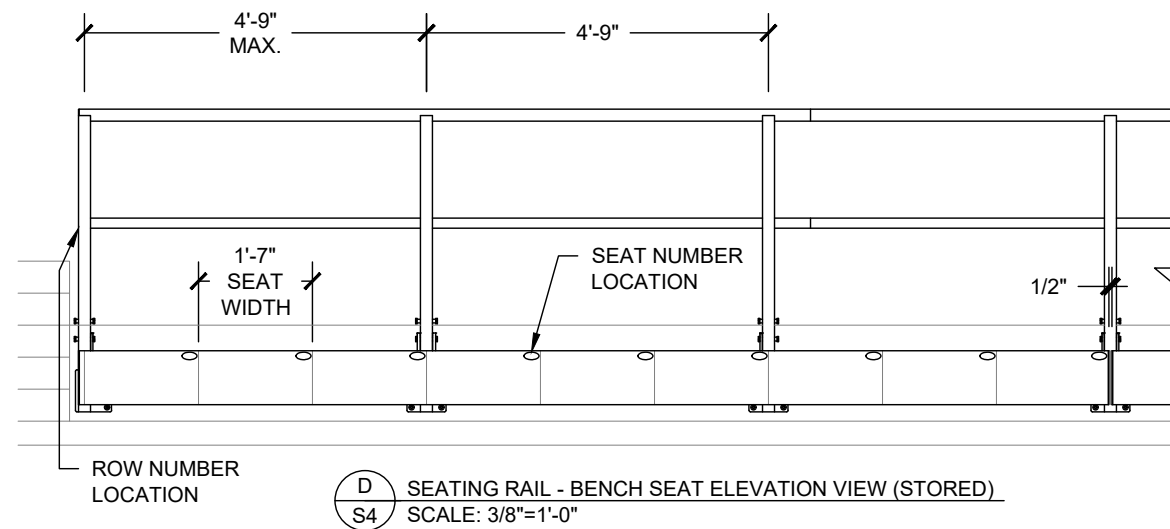
A SEATING RAIL - BENCH SEAT SECTION VIEW (IN USE)
S4 SCALE: 3/8"=1'-0"



C SEATING RAIL - BENCH SEAT SECTION VIEW (STORED)
S4 SCALE: 3/8"=1'-0"



B SEATING RAIL - BENCH SEAT ELEVATION VIEW (IN-USE)
S4 SCALE: 3/8"=1'-0"



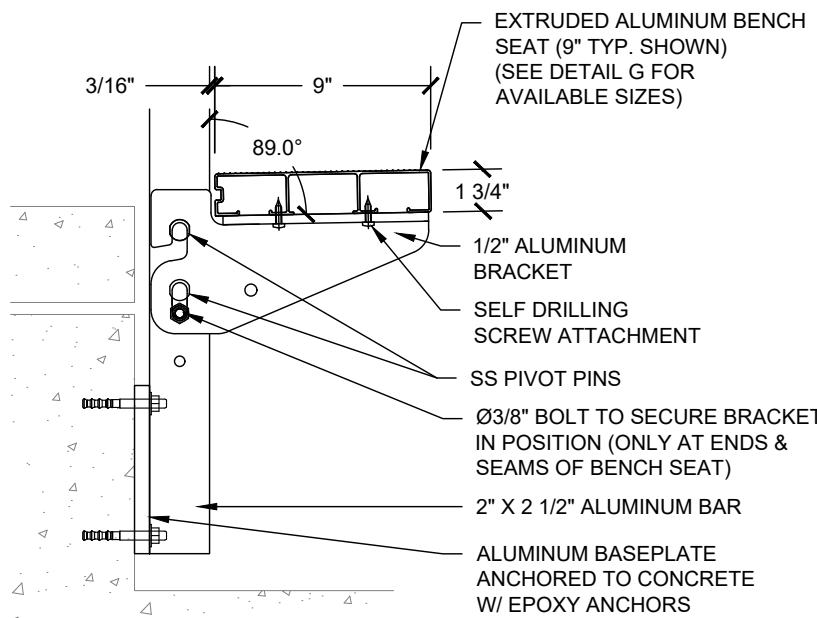
D SEATING RAIL - BENCH SEAT ELEVATION VIEW (STORED)
S4 SCALE: 3/8"=1'-0"

TABLE 4A - MAX BENCH SEATS PER ROW (2'-9" STADIA TREAD)

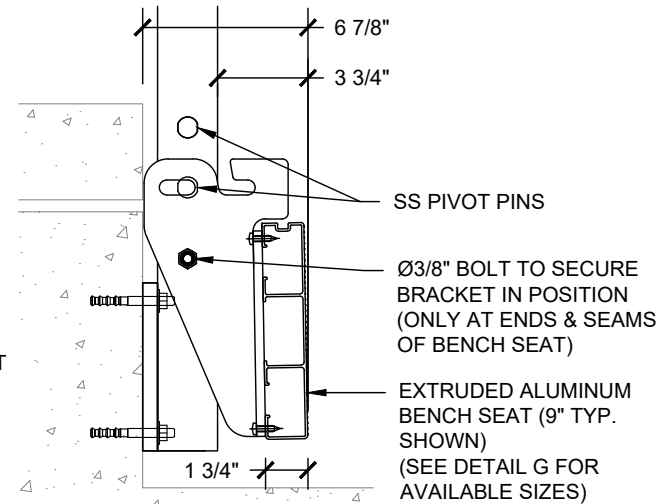
BENCH SIZE	DUAL ACCESS AISLE	SINGLE ACCESS AISLE
9"	34 SEATS	17 SEATS
10"	30 SEATS	15 SEATS
11-1/2"	25 SEATS	12 SEATS

TABLE 4B - MAX BENCH SEATS PER ROW (2'-10" STADIA TREAD)

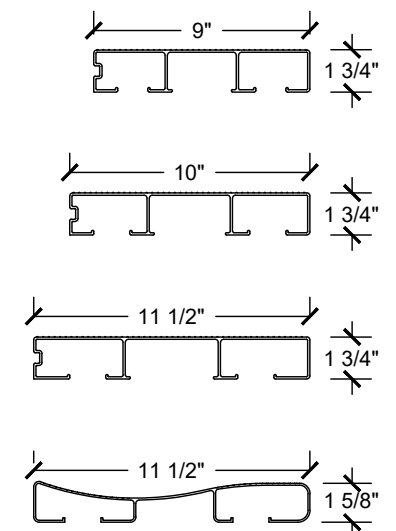
BENCH SIZE	DUAL ACCESS AISLE	SINGLE ACCESS AISLE
9"	37 SEATS	18 SEATS
10"	34 SEATS	17 SEATS
11-1/2"	29 SEATS	14 SEATS



E BENCH SEAT DETAIL (IN-USE)
S4 SCALE: 1 1/2"=1'-0"



F BENCH SEAT DETAIL (STORED)
S4 SCALE: 1 1/2"=1'-0"



G AVAILABLE BENCH SIZES
S4 SCALE: 1 1/2"=1'-0"

SEATING RAIL
ALUMINUM RAIL BENCH SEAT DETAILS

DRAWN BY: NBB DATE: 3/27/20
PROJECT NUMBER: SALES
SHEET NUMBER: SCS-SEATING-RAIL-S4

ITEM	DESCRIPTION	AUTH	DATE