

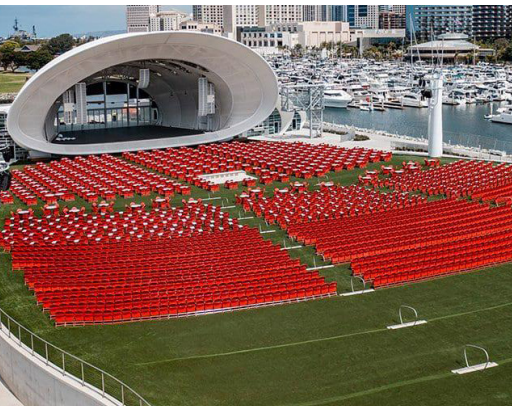
Amphitheater

Project: San Diego Symphony
Completion: April 2021

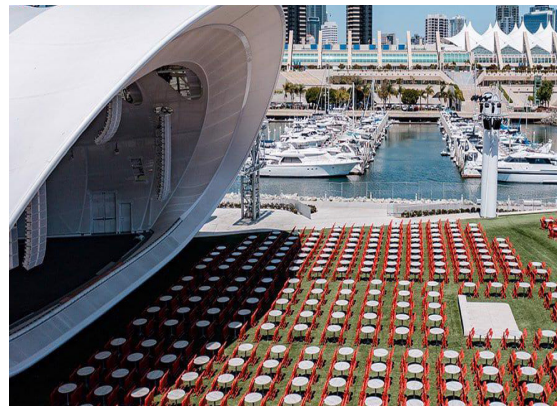
Location: San Diego, CA



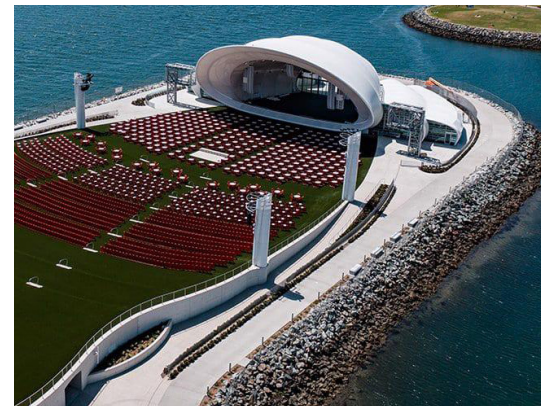
Scope: Home to the San Diego Symphony, Rady Shell at Jacobs Park (a.k.a. “The Shell”) is the first permanent, year-round waterfront concert and events venue in the nation operated by a symphony orchestra. Faced with the task of providing versatile, temporary staging solutions to comfortably accommodate a wide range of performances and guests, the design team turned to Sightline Commercial Solutions to custom fabricate a system of 92 single sided SC90® platforms for the elite entertainment venue’s orchestra and seating risers. Featuring aluminum extruded frames and backers with HDPE finishes, the platforms can easily be reconfigured or removed based on the event or performance. Moreover, they are built using structural plywood with black polypropylene surface laminate to resist scuffing, are lightweight for easy movement, and are engineered to withstand the San Diego heat. In addition to the portable platforms, Sightline Commercial Solutions also provided 6,000 red chairs to give the venue a pop of color and designed 288 table (“tablet”) attachments to add a premium quality experience to select seating areas. The customized extensions fold away when not in use to facilitate ingress and egress or may be removed altogether to accommodate alternate seating formats. Sightline Commercial Solutions also created carts specially designed to easily transport the platforms and seating attachments to and from the site.



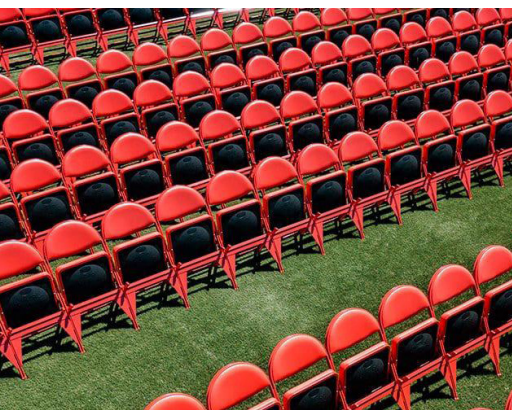
Versatile, temporary staging solutions to comfortably accommodate a wide range of performances and guests.



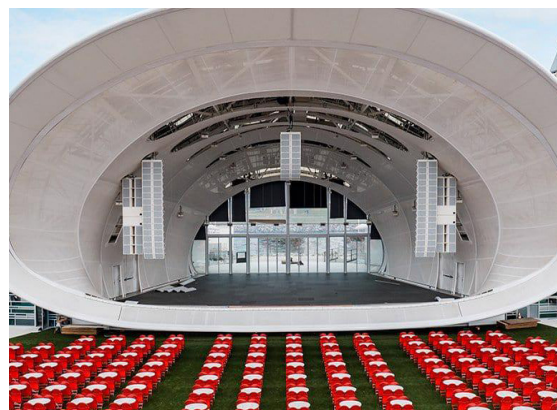
Our team designed 288 table (“tablet”) attachments to add a premium quality experience to select seating areas.



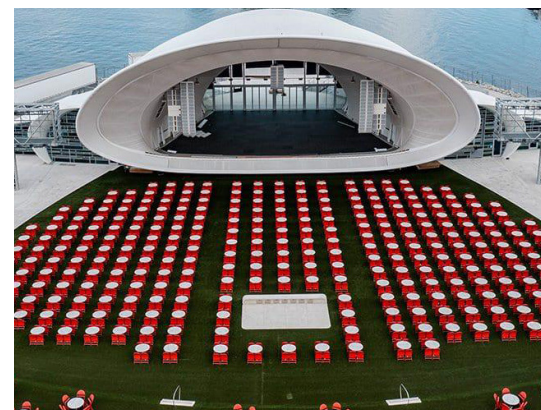
Platforms were built with structural plywood with black polypropylene surface laminate to resist scuffing and withstand the heat.



6,000 red chairs to give the venue a pop of color.



Our team custom fabricated a system of 92 single sided SC90® platforms for the elite entertainment venue’s orchestra.



The Shell will host up to 110 events a year by the San Diego Symphony and other organizations.

We elevate places where experiences happen by providing innovative engineering, fabrication, and installation solutions to the most complex challenges. Discover our unconventional approach.