

# LED Railing

## Lit Railing System



Enhance the ambiance and safety of any environment with Sightline Commercial Solutions' LED Railing. Our highly engineered lighting system can be seamlessly incorporated into stairs, walkways and balconies – in both interior and exterior applications – to add elegance and guide navigation. Available in options and colors suitable for a variety of applications, our LED components integrate fully and discretely into top caps and handrails, eliminating any distracting visuals of the lighting mechanisms. Dynamic color changing strip lights are also available to set a dramatic scene for any occasion. All Sightline Commercial Solutions LED Railing is fully code compliant for egress applications and can be customized to meet your project's needs.



Photo: Mitchell Stier Photo



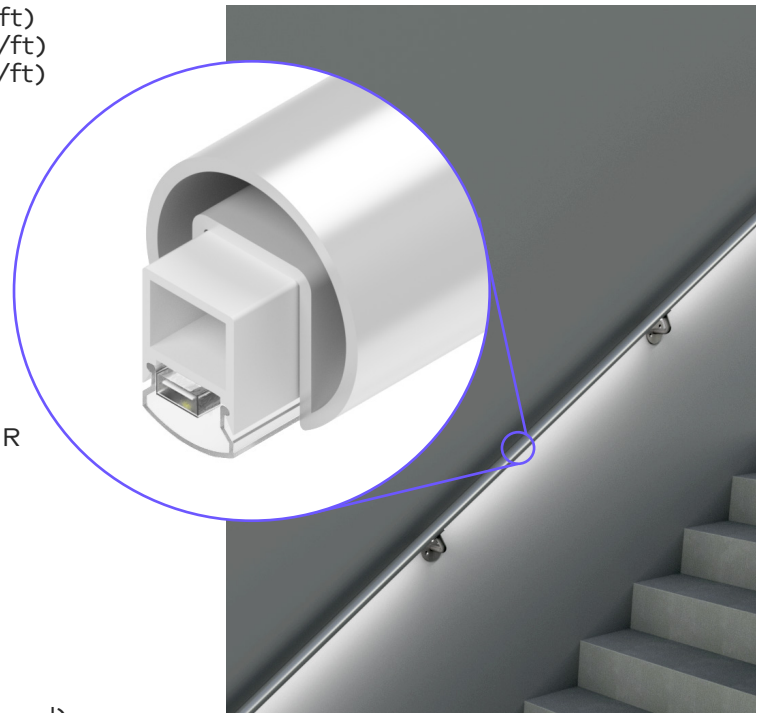
# LED Railing

## Single Color LED Strip System



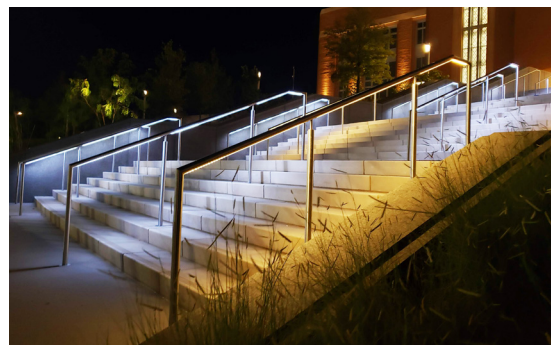
### Lighting Specification

Output:	3.0 watts/ft (317 max lumens/ft) 4.0 watts/ft (389 max lumens/ft) 5.0 watts/ft (468 max lumens/ft)
Color:	2700K 3000K 3500K 4000K AMBER
Input Voltage:	24VDC
Orientation:	Symmetric or Asymmetric
Beam Angle:	110° (Symmetric) 55° (Asymmetric) @ 45° NADIR
Lens:	Frosted, Opaque, or Clear
Rating:	IP67
CRI:	95+
Lifespan:	Up to 70,000 hrs (LM70)
Power Supply:	Remote mount (Std. OR In-Ground) 110-277VAC input, 24VDC Output 100, 2x100, or 3x100 max watt output
Dimmable:	Yes (optional)
Certifications:	UL (ETL), RoHS



### Rail Specification

Mount Type:	Post, Wall, Guardrail Top Rail (Including Glass Top Cap)
Rail Material:	Aluminum or Stainless Steel
Handrail Profiles:	1.5", 1.66", 1.9"
Top Rail Profiles:	1.5", 1.66", 1.9", 2.0", 3.0", 1.3" SQ., 1.5" SQ
Finishes:	Anodize, Brushed, Powder coat



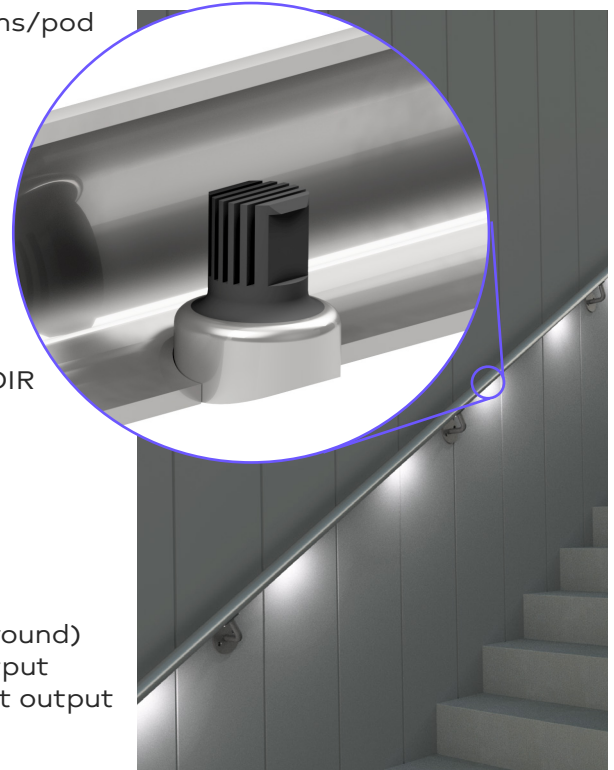
# LED Railing

## Single Color LED POD System



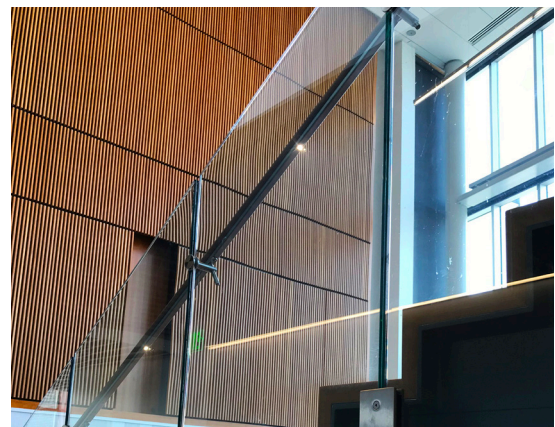
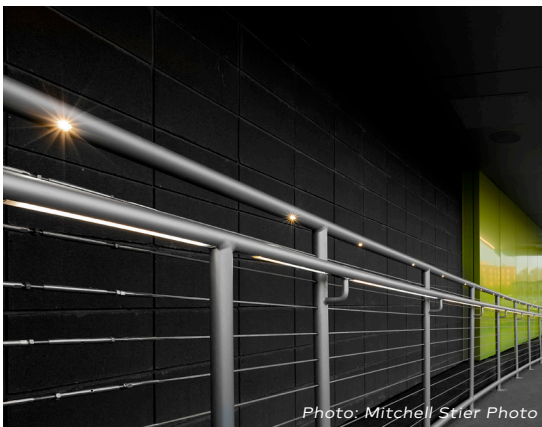
### Lighting Specification

Output:	2.0 watts/pod, 154 max lumens/pod
Color:	2700K 3000K 3500K 4000K AMBER
Input Voltage:	24VDC
Orientation:	Symmetric or Asymmetric
Beam Angle:	110° (Symmetric) 55° (Asymmetric) @ 45° NADIR
Lens:	Clear or Frosted
Rating:	IP65
CRI:	80-85+
Lifespan:	Up to 50,000 hrs (L70)
Power Supply:	Remote mount (Std. OR In-Ground) 110-277VAC input, 24VDC Output 100, 2x100, or 3x100 max watt output
Dimmable:	Yes (optional)
Certifications:	UL (ETL), RoHS



### Rail Specification

Mount Type:	Post, Wall, Guardrail Top Rail (NOT available as glass cap)
Rail Material:	Aluminum or Stainless Steel
Handrail Profiles:	1.5", 1.66", 1.9"
Top Rail Profiles:	1.5", 1.66", 1.9", 2.0"
Finishes:	Anodize, Brushed, Powder coat



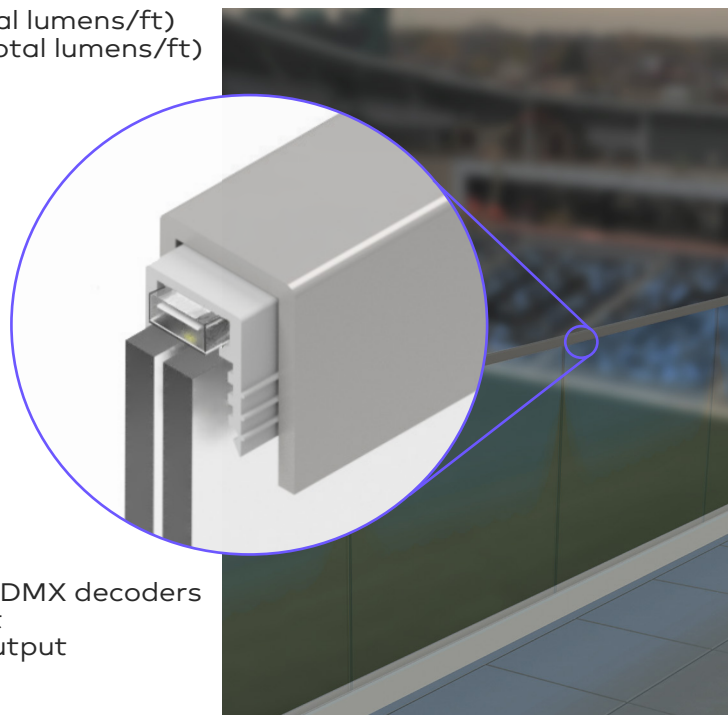
# LED Railing

## Color Changing LED Strip System



### Lighting Specification

Output:	RGB - 6.0 watts/ft (338 max total lumens/ft) RGBW - 6.0 watts/ft (292 max total lumens/ft)
RGBW Color:	2700K 3000K
Input Voltage:	24VDC
Orientation:	Symmetric or Asymmetric
Beam Angle:	110°
Lens:	Frosted, Opaque, or Clear
Rating:	IP67
CRI:	93+
Lifespan:	RGB - Up to 50,000 hrs RGBW - Up to 30,000 hrs (L70)
Power Supply:	Remote mount in enclosure with DMX decoders 110-277VAC input, 24VDC Output 100, 2x100, or 3x100 max watt output
Dimmable:	Yes (optional)
Controller:	6"H x 4.5"W Wall Mount Touch Screen (programmable)
Decoder:	4-Channel DMX with RJ45 & XLR inputs
Certifications:	UL (ETL), RoHS



### Rail Specification

Mount Type:	Guardrail Top Rail (Including Glass Top Cap)
Rail Material:	Aluminum or Stainless Steel
Top Rail Profiles:	1.5", 1.66", 1.9", 2.0", 3.0", 1.3" SQ., 1.5" SQ
Finishes:	Anodize, Brushed, Powder coat

