



Project: Las Vegas Convention Center
Architect: TVS Nevada
Completion: February 2021

Location: Houston, TX
Contractor: Truner | Martin-Harris

Scope: One of the busiest meeting facilities in the world, the Las Vegas Convention Center debuted a \$1 billion, 1.4 million square foot West Hall expansion in early 2021. The new facility, which connects the Las Vegas Strip to the convention center's South Hall, boasts a contemporary design and an abundance of natural light. The space also features more than 4,100 linear feet of Sightline Commercial Solutions' customized railing. Using 3-D site scanning, our team designed railing systems for use on two levels of the grand lobby overlook, the venue's monumental stairs and adjacent overlooks, multiple sets of switchback stairs and along the skyway bridge. Due to the construction of the stairs, the Sightline Commercial Solutions team also custom engineered an alternate "false" stringer to securely accommodate the shoe attachment for the glass guardrail. Glass guardrail is also featured along the third-level outdoor terrace, which can accommodate 20,000 attendees and offers stunning views of the Las Vegas Strip.



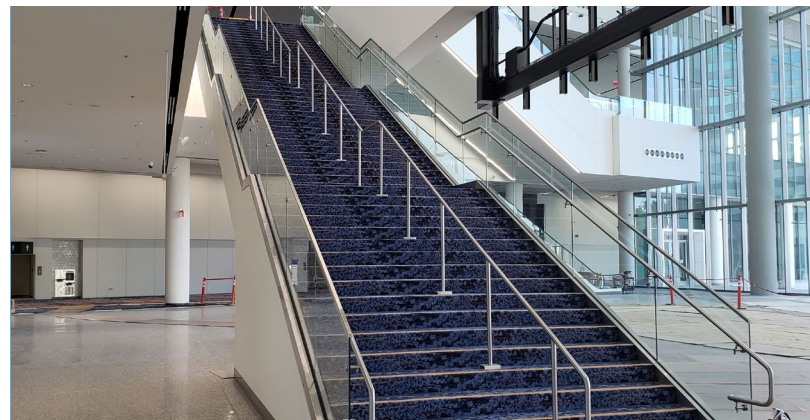
Glass Guardrail is shoe mounted and post mounted throughout the convention center.



Custom engineered Sightline Commercial Solutions railings are used in three switchback stair locations.



The third-floor outdoor terrace safely allows up to 20,000 attendees to enjoy views of the Las Vegas Strip, thanks to our glass guardrail.



Sightline Commercial Solutions designed railing systems for the center's stairs using 3-D site scanning.

We **elevate places** where experiences happen by providing **innovative** engineering, fabrication, and installation solutions to the **most complex challenges**. Discover our **unconventional** approach.