

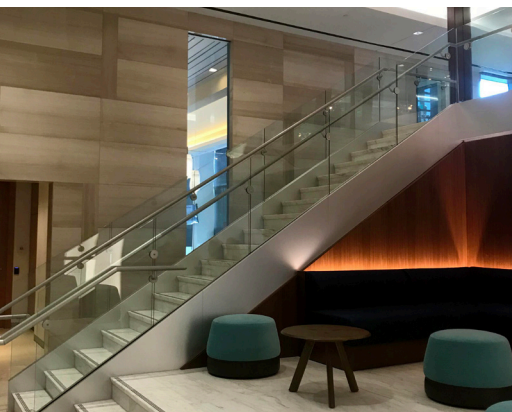


**Project:** Granite Park VII  
**Architect:** BOKA Powell  
**Partners:** Cardinal Glass

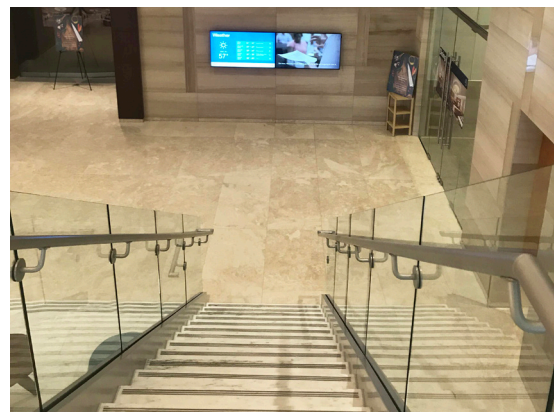
**Location:** Plano, TX  
**Contractor:** Austin Commercial  
**Completion:** December 2017

**Scope:**

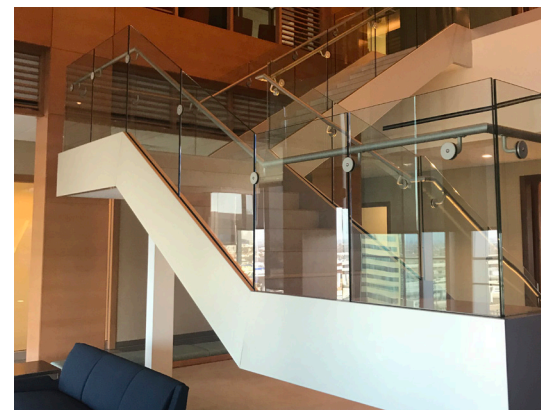
Granite Park VII is a one-of-a-kind mixed-use office community. This thriving hub of activity and community is where people come together to work, play, and create. The property is part of the Granite Park campus, which is comprised of a total of eight commercial properties in the vibrant Legacy submarket. The elevated building offers the perfect environment to support Plano's thriving businesses. Working against an aggressive timeline, Sightline Commercial Solutions delivered stunning glass railing solutions for the newly constructed, 330,000-square-foot, 10-story building that serves as the Southwest regional home to sole tenant Fannie Mae (the Federal National Mortgage Association). Track Rail with transparent glass panels was selected to create the sleek, modern, open atmosphere for the building's entry and gathering spaces.



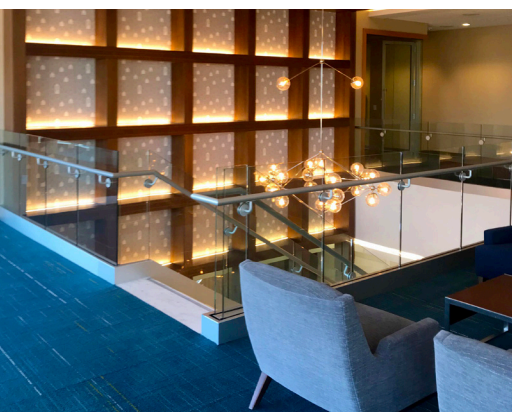
Track Rail with glass panels sets a minimalist tone that starts in the lobby.



Aluminum and glass railings add support, safety and sophistication to stairways and overlooks.



Thru-glass standoffs used to anchor the handrails also offer added architectural detail.



Stair, landing, and overlook railings are securely installed with an anodized aluminum base shoe mechanically fastened



Clear, tempered, laminated glass with PVB interlayer and polished edges enhances the airy aesthetic.



Transparent railing panels afford unobstructed views of the expansive mixed-use Granite Park development.

We elevate places where experiences happen by providing innovative engineering, fabrication, and installation solutions to the most complex challenges. Discover our unconventional approach.