

Amazon University

Office Space

Project: Amazon University
Architect: IA | Interior Architects
Partners: SOS Steel

Location: Alto, CA
Contractor: Devcon Construction
Completion: September 2017

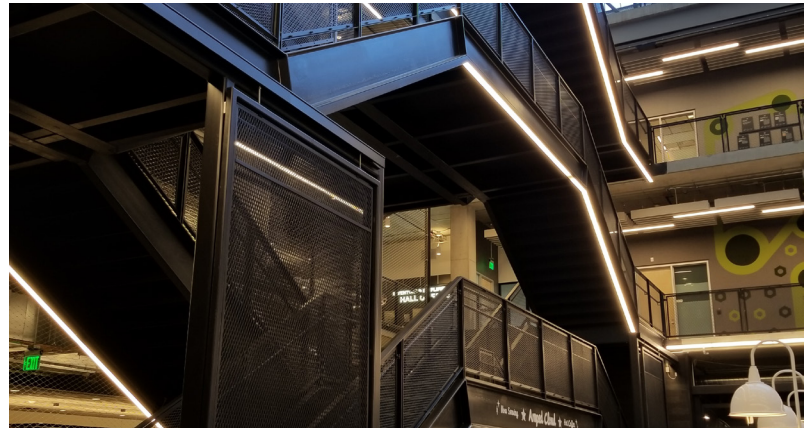
Scope:

Further expanding its Silicon Valley footprint, tech giant Amazon opened a 214,000-square-foot office complex at 2100 University Avenue, more than doubling the number of jobs in East Palo Alto and establishing the city's largest technology presence. Housed in a converted warehouse space, the University Square office building boasts a contemporary, open-concept design similar to spaces found in San Francisco's SoMa district yet infused with the Amazon essence. To complement the modern aesthetic, Sightline Commercial Solutions custom engineered more than 1,200 linear feet of architectural railing for the four-story central atrium stairways, landings and overlooks. - Miscellaneous metals were provided by SOS Steel Co Inc.

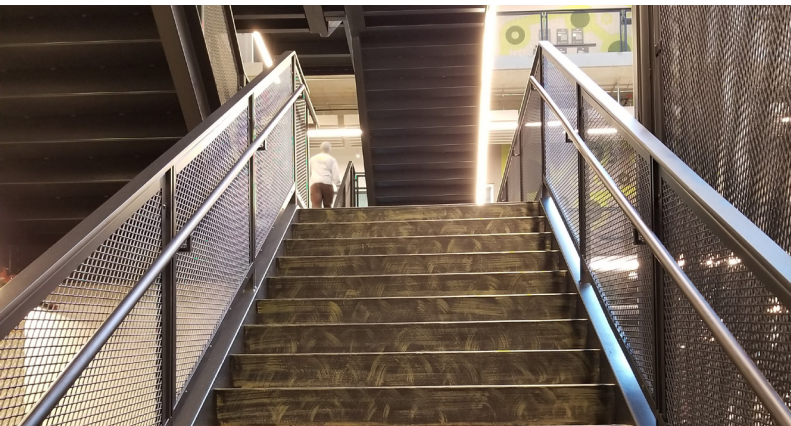
Photos courtesy of Rowe Fenestration Inc.



Steel toe kick plate added below the guardrail on overlooks and landings prevents smaller objects from falling over the edge.



Gridguard™ railing flows seamlessly from the atrium landings and staircases to the ground-floor gathering area.



Handrail is attached to the steel frame of the guardrail on staircases.



Metal infill panels with steel framing were custom designed by slitting & stretching metal sheets to create diamond-shaped infills.

We elevate places where experiences happen by providing innovative engineering, fabrication, and installation solutions to the most complex challenges. Discover our unconventional approach.