

# State Farm Stadium

## Stadium



**Project:** State Farm Stadium  
**Architect:** Bar Napkin Productions  
**Partners:** Walters & Wolf

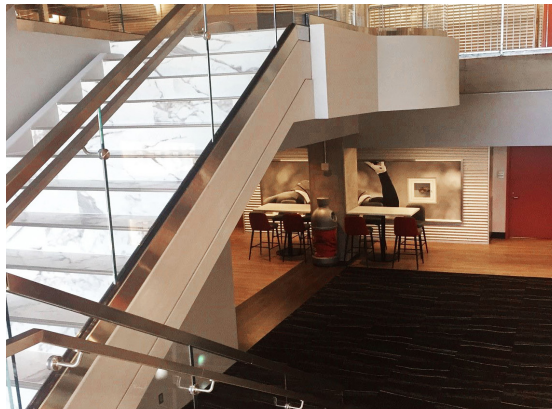
**Location:** Glendale, AZ  
**Contractor:** Hunt Construction  
**Completion:** July 2017

**Scope:**

The Arizona Cardinals envisioned a more sophisticated Club Level at the State Farm Arena, formerly known as the University of Phoenix Stadium. With the recent opening of the 50-Yard Lounge, they scored a win by effectively combining luxury, entertainment, and of course — football. Completed in 2017, the renovated lounge features extensive upgrades, including an HD/ LED video wall, illuminated bars and upgraded finishes. Sightline Commercial Solutions’ Track Rail was central to creating an inviting experience for Cardinals fans. We used 322 square feet of tempered low iron glass for staircases and overlook railing areas. The sleek design of the Track Rail system blends seamlessly with the interior of the lounge area.



Curving railing is a challenging endeavor, requiring careful work and precise measurement.



A custom, square stainless steel handrail was attached to the glass railing using through-glass standoffs.



The sleek design of the Track Rail system blends seamlessly with the interior of the lounge.



A total of 322 square feet of tempered low iron glass was used for the staircase and overlook railing.



A 2x2” custom square top cap made from 16 gauge stainless steel wraps around the glass railing on the stairs and the overlook.



Clear, low-iron tempered glass with polished exposed edges and stainless steel top rail create a luxurious setting.

We elevate places where experiences happen by providing innovative engineering, fabrication, and installation solutions to the most complex challenges. Discover our unconventional approach.