

PayPal Park

Soccer Stadium

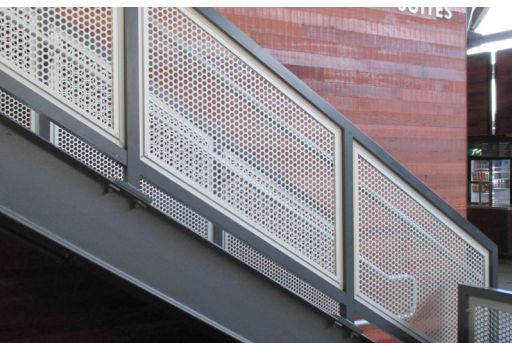


Project: PayPal Park
Architect: HOK
Completion: March 2015

Location: San Jose, CA
Contractor: Devcon Construction

Scope:

Over 16,000 linear feet of custom ornamental railing was designed, engineered, manufactured and installed for PayPal Park, formerly Avaya Stadium, home of Major League Soccer's San Jose Earthquakes. Sightline Commercial Solutions provided a custom anodized aluminum frame with painted perforated infill panel with a unique look. Handrails, cable railing, drink rails, fencing and gates were also provided. BIM utilized for coordination of railing connections to structural steel and steel stadia system.



Aluminum frame with painted perforated infill panel.



Aluminum frame with painted perforated infill panel.



Tensiline™ Cable Railing throughout stadium.



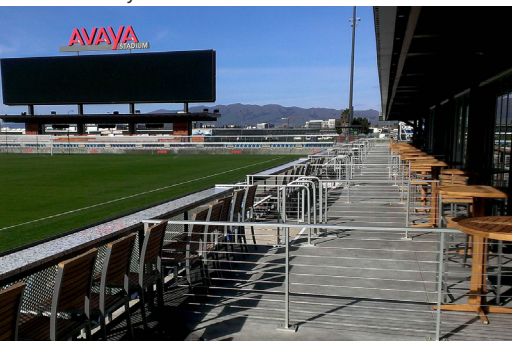
Tensiline Cable Railing with hinged drop down for camera bay areas.



Aluminum frame with painted perforated infill panel and drink rail attachment.



Tensiline Cable Railing at seating entrances.



Tensiline Cable Railing used as suite dividers.



Aluminum Safe Standing™ Rail for supports sections at end zones.



Aluminum guardrail in pitch level suites.

We elevate places where experiences happen by providing innovative engineering, fabrication, and installation solutions to the most complex challenges. Discover our unconventional approach.