

Truist Park

Ballpark

Project: Truist Park
Architect: Populous
Completion: March 2017
Scope:

Location: Atlanta, GA
Contractor: American Builders 2017

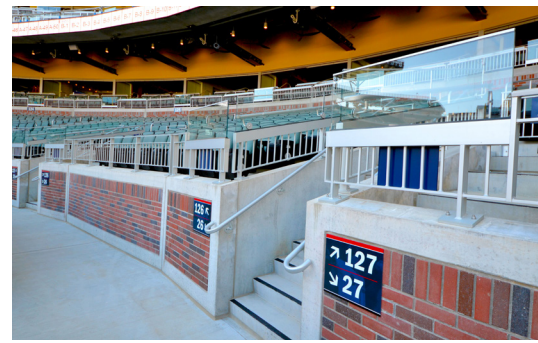
Sightline Commercial Solutions was selected to provide over 41,000 feet of interior and exterior ornamental railing to the new Truist Park. For example, over 19,000 ft. of anodized aluminum Classic Picket railing can be found on stairs, balconies, ADA compliance sections and throughout the fan seating areas. Over 5,500 ft. Track Rail is utilized on balcony overlooks as well as front of seating areas. Decorative cable railing with blackened steel frame and custom bronze cable infill can be found in the Home Plate Pub. We also contributed recycled materials to help achieve their desired LEED certification.



Anodized aluminum picket railing on balcony overlooks above the Terrapin Taproom.



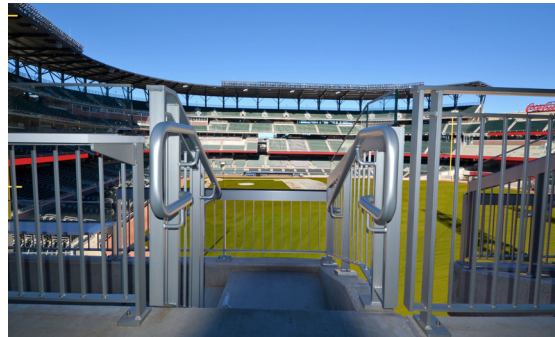
Track Rail utilized on multi-level balconies overlooking the Chop House Gate allowing for clear sightlines.



Anodized aluminum picket railing utilized throughout the fan seating areas. Track Rail used at fan entrances and end of aisles.



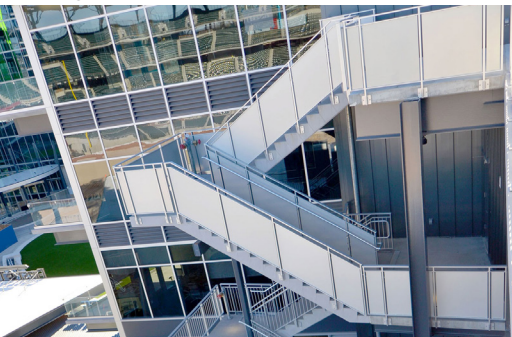
Home Plate Pub features a highly decorative cable railing with blackened steel frame.



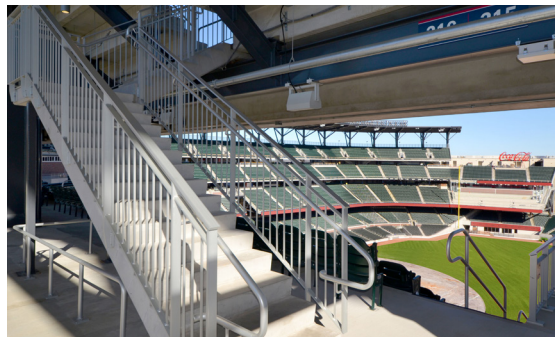
GripRail™ and Classic Picket Railing can be found along stairs, overlooks, ADA sections and other locations.



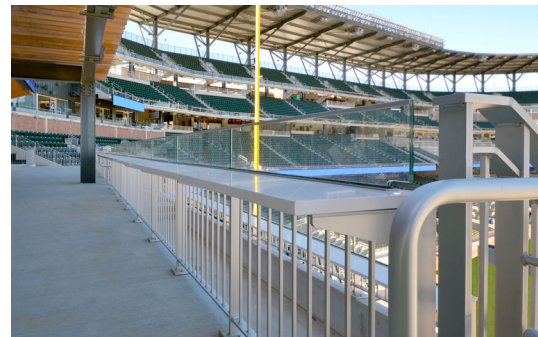
Custom quarter round aluminum support plate and gussets for the solid surface tops to sit on.



Anodized aluminum post supported railing with 1/4" thick plate infill.



Aluminum Picket railing on stairs leading to upper level fan seating areas, and ADA compliance areas.



Aluminum Picket railing with optional aluminum drink rail topped with Track Rail

We **elevate** places where experiences happen by providing **innovative** engineering, fabrication, and installation solutions to the **most complex** challenges. Discover our **unconventional** approach.