

# TD Ameritrade Park

## Ballpark

**Project:** TD Ameritrade Park  
**Architect:** Populous | HDR  
**Completion:** April 2010

**Location:** Omaha, NE  
**Contractor:** Kiewit Building Group

**Scope:** Located in the heart of Omaha, Nebraska, TD Ameritrade Park stands as a beacon of excitement for baseball enthusiasts. The the park has a seating capacity of approximately 24,000 spectators. It features a modern design with spacious concourses, state-of-the-art amenities, and excellent sightlines from every seat, ensuring an immersive experience for fans. Sightline Commercial Solutions provided 15,000 linear feet of ornamental railing to the TD Ameritrade Park which hosts the College World Series, Creighton University Bluejays college baseball among other events. Custom Tensiline™ Cable Railing, Gridguard™ Mesh Railing, aluminum Griprail™, drink rails and Classic Picket Railing are among the railing styles provided.



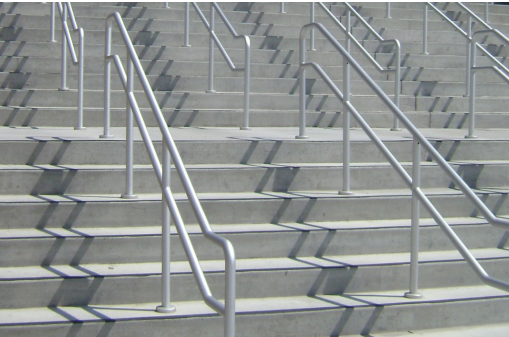
Gridguard intercrimp wire mesh within a U-edge channel border.



Gridguard intercrimp wire mesh within a U-edge channel border.



Tensiline cable railing with aluminum frame.



Aluminum Griprail metal handrail on monumental stairs.



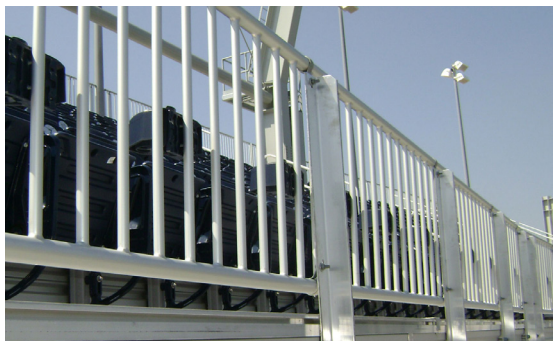
Gridguard mesh railing with anodized aluminum frame.



Custom aluminum mesh railing, and aluminum aisle railing.



Custom post supported drink rail within suite areas and throughout the ballpark.



Aluminum side mounted picket railing at front of bowl and stairs lead to field level.



Tensiline cable railing with aluminum frame.

We **elevate** places where experiences happen by providing **innovative** engineering, fabrication, and installation solutions to the **most complex** challenges. Discover our **unconventional** approach.