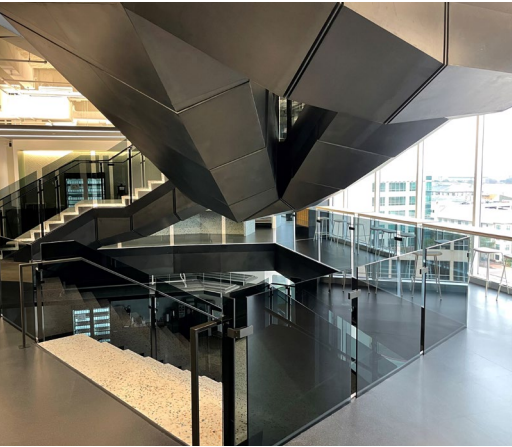




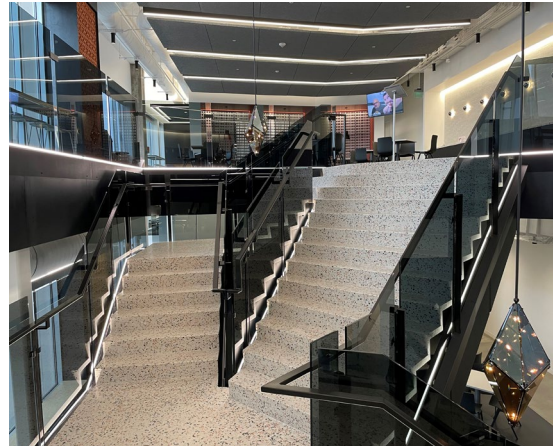
**Project:** SPLUNK  
**Architect:** Interior Architects  
**Partners:** Pulp Studios

**Location:** Plano, TX  
**Contractor:** Novo Construction, Inc.  
**Completion:** June 2021

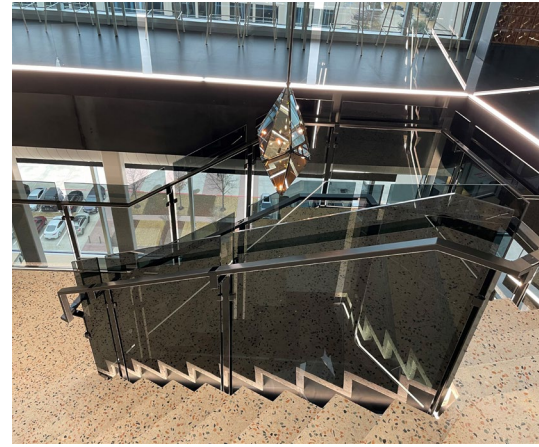
**Scope:** San Francisco-based tech firm, SPLUNK, doubled the size of its Plano, Texas, office by leasing space in the Gateway at Legacy Building, giving the company more than 110,000 sq. ft. to accommodate 450 employees. Supporting the staff in safety and style is Sightline Commercial Solutions' railing, including 231 linear feet of raked stair guardrail and 151 linear feet of overlook guardrail. Adding a sleek, modern finish is 9/16" PVB tempered laminated glass with a smoky gray interlayer. Due to the complex layout of the staircase, Sightline Commercial Solutions utilized its 3D scanning capabilities to deliver precise dimensions for the railing system. In fact, the project called for the scanning of more points than any other Sightline Commercial Solutions project of its size. Handrails were mounted to large posts supplied by Dovetail Custom Wood and Metal, requiring collaborative coordination to successfully achieve the desired artistic angle of the stairs.



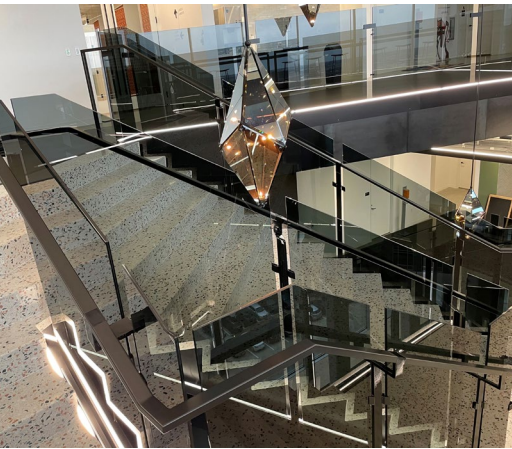
Unique smoked glass provides distinct character and appeal.



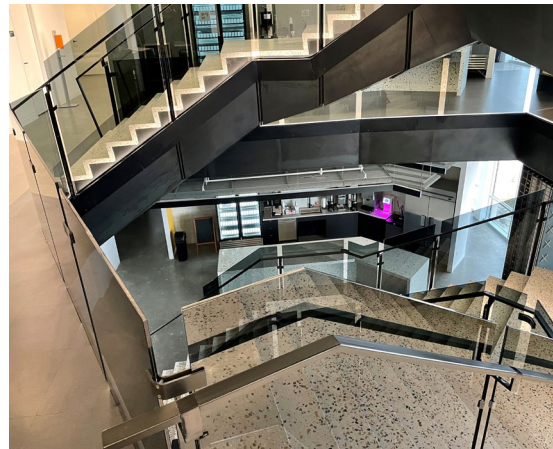
High definition 3D scanning was critical to assure a perfect fit with the complex geometry of this showcase stairway



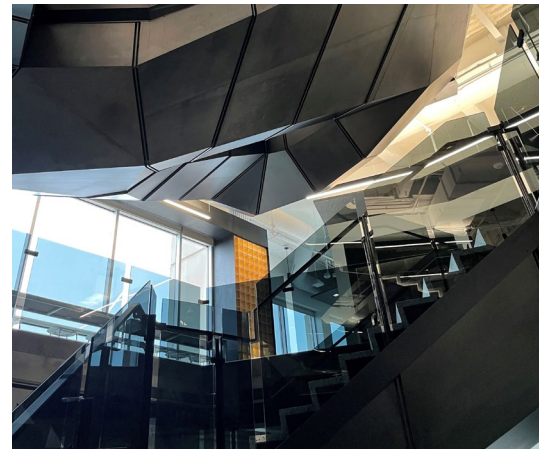
Handrails assist over 450 employees at the Legacy Building.



Glass railing provides a modern and artistic appeal to the stairs.



From above, the glass railing is simplistic yet part of the overall design of the space.



The view of the smoky gray glass from the first floor adds to the visual appeal of this project.

We **elevate places** where experiences happen by providing **innovative** engineering, fabrication, and installation solutions to the **most complex challenges**. Discover our **unconventional** approach.