

Target Center Renovation

Basketball Arena

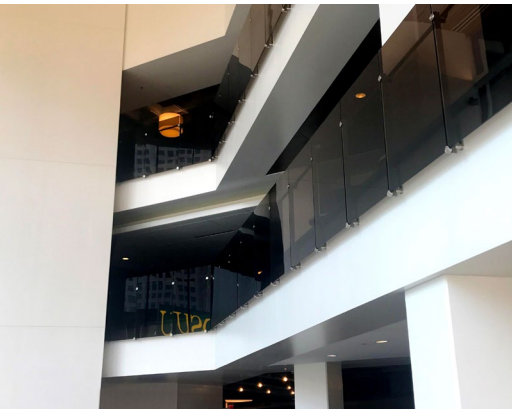


Project: Target Center Renovation
Architect: Alliance + SCD
Partners: Empirehouse

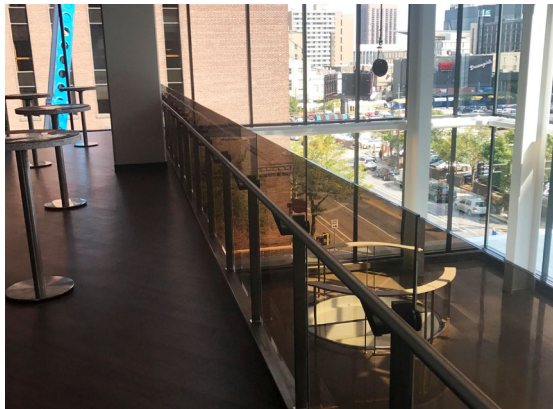
Location: Minneapolis, MN
Contractor: Mortenson Construction
Completion: October 2017

Scope:

Target Center had a significant renovation overhaul in 2017. The renovation project aimed to modernize and update the arena to enhance the fan experience and ensure the long-term viability of the venue. The renovation expanded and upgraded amenities throughout the arena, including improved concourse spaces. Sightline Commercial Solutions provided our Dot Series railing, Track Rail, as well as floor, wall, and glass-mounted handrail for this project. The project called for a variety of specialty glass choices, including bent and tightly curved glass, and 1/2" laminated glass with a PVB interlayer. Our team used a color interlayer to dim the light that comes through the large glass windows in specific areas of the arena. The custom railings installed at Target Center deliver maximum impact in aesthetics, strength, and sustainability.



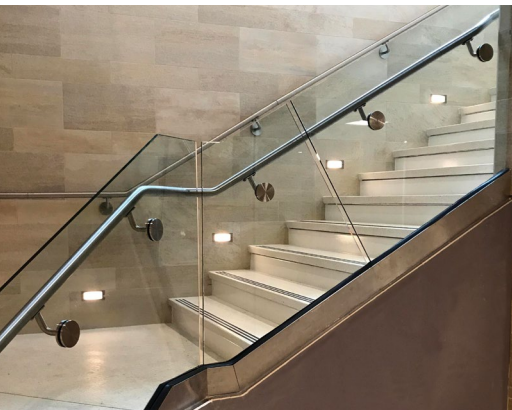
The PVB interlayer plays in high contrast to the white paint, and light finishes.



The color interlayer also dims the passage of light throughout the space.



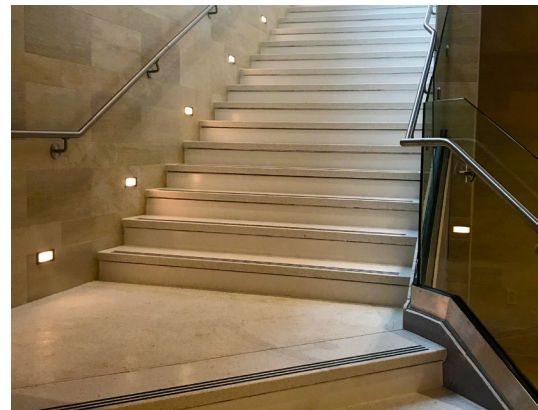
Fascia mounts for the Dot Series railing are almost completely hidden by the glass panels.



Specially-formed glass was provided for our Track Rail, which was installed on the stairs.



Specialty bent glass was also utilized for Track Rail on overlooks.



Stainless wall and glass-mounted handrails accompany our Track Rail on the stairs.

We elevate places where experiences happen by providing innovative engineering, fabrication, and installation solutions to the most complex challenges. Discover our unconventional approach.