

# Bobby Dodd Stadium

## Sports Stadium

**Project:** Bobby Dodd Stadium  
**Completion:** September 2023

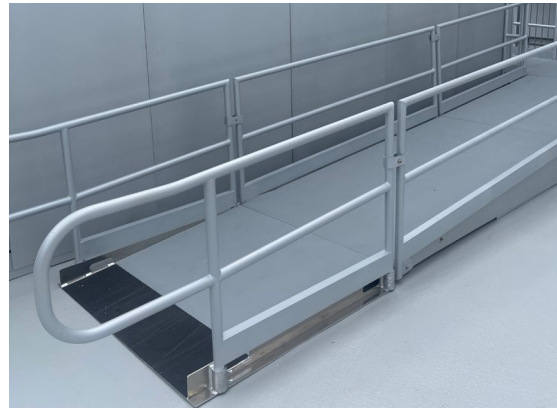
**Location:** Atlanta, GA

**Scope:**

When Hyundai signed on as the new corporate sponsor of Georgia Tech’s Bobby Dodd Stadium, they wanted a memorable way to highlight their sponsorship throughout the college football season. Sightline Commercial Solutions answered the call by using 3D renderings to bring to life an innovative presentation space in the stadium’s premium VIP riser area and party deck, known as “The Hyundai Nest.” Working under an extremely short lead time, the team used a combination of its Clima-Core® all-weather platforms and versatile SC90® platforms to design and install a pedestal stage where Hyundai showcased a new car at every game, each one dramatically delivered by crane. VIP Drink Rail, guardrail and ADA ramps add accessibility and ambiance to this truly unique viewing experience while aluminum closure panels clipped to the side of the stage enhance the structure’s stability. From an all-inclusive curated food menu to the exceptional vantage point fans get of both the action on the field and the Midtown Atlanta skyline, The Hyundai Nest is perfect for family, alumni, business and other gatherings.



Sleek VIP Drink Rail enhance the safety of the VIP area.



ADA ramps add accessibility to the unique viewing area.



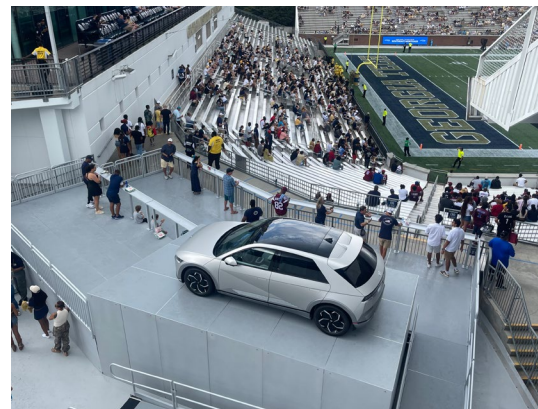
Guardrail provides safety to the viewing area.



Clima-Core® all-weather platforms and versatile SC90® platforms create the pedestal stage.



The Hyundai Nest can be spotted just off the field, an excellent advertising opportunity.



Hyundai showcases a new car at every game on the stage.

We **elevate places** where experiences happen by providing **innovative** engineering, fabrication, and installation solutions to the **most complex challenges**. Discover our **unconventional** approach.