

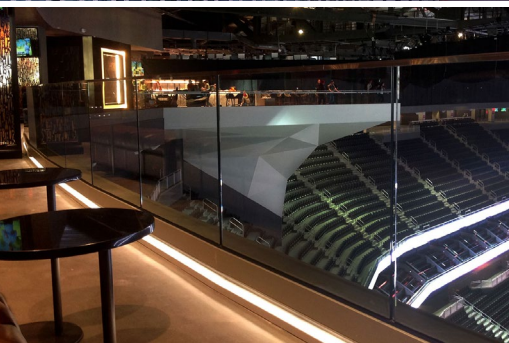
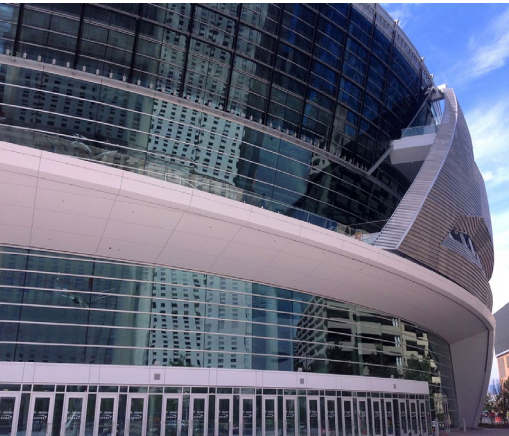
# T-Mobile Arena

## Arena

**Project:** T-Mobile Arena  
**Architect:** Populous  
**Completion:** April 2016  
**Scope:**

**Location:** Las Vegas, NV  
**Contractor:** Hunt | Penta Group

Undoubtedly, Las Vegas knows how to put on a show, and now it has a 650,000 square-foot, 20,000 seat venue to match its reputation. Part of the arena's beauty and majesty can be credited to an oft-overlooked (quite literally) attribute that spans the entire venue – over 12,400 linear feet of railing structures. From the outside-in, the railings play a crucial role not only in the arena's safety and security features, but also in its aesthetic appeal.



Custom-engineered base shoe glass railing system with LED lighting.



Custom-engineered base shoe glass railing system with LED lighting.



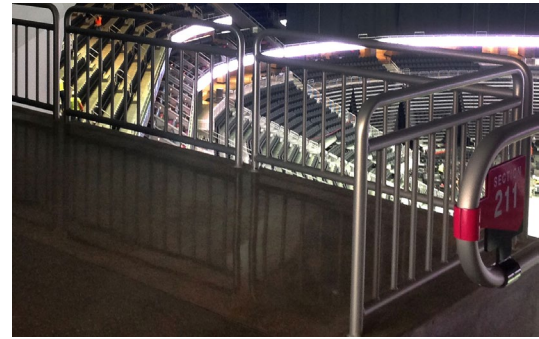
Custom drink rails with stainless steel supports friction-fit to 1/2" tempered glass.



Stainless steel cable railing with steel post frame, aluminum Griprail™ in bowl seating.



Glass base shoe railing with stainless steel handrail dividing suite areas.



Custom classic picket railing around ADA platforms.



Glass base shoe railing on stairs and balcony overlooks throughout concourse levels.



Back side of the custom LED lit C-channel base shoe glass railing system.



Front side of the custom LED lit C-channel base shoe glass railing system.

We **elevate** places where experiences happen by providing **innovative** engineering, fabrication, and installation solutions to the **most complex** challenges. Discover our **unconventional** approach.