

# Climate Pledge Arena

## Hockey Arena

**Project:** Climate Pledge Arena

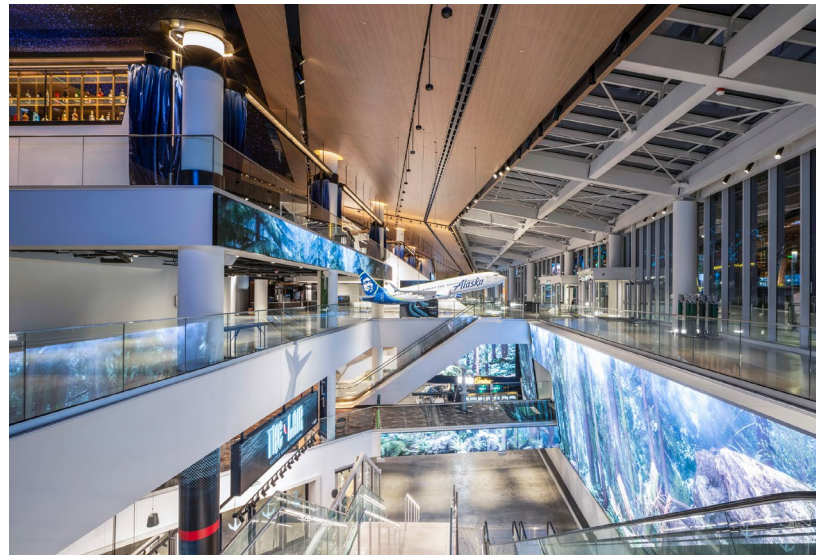
**Architect:** Populous

**Location:** Seattle, WA

**Completion:** November 2018

**Contractor:** Mortenson

**Scope:** After the National Hockey League (NHL) granted an expansion franchise to Seattle in 2018, KeyArena underwent a \$1.15 billion redevelopment and was renamed Climate Pledge Arena in 2020. Located in Seattle’s Uptown neighborhood, the home of the NHL’s Kraken, WNBA’s Storm and the Seattle University men’s basketball team is the world’s first zero-carbon arena, employing numerous sustainable materials, practices and operations. The facility is powered solely on renewable energy sources, houses electric vehicle charging stations and harvests rainwater from the roof to create the “greenest” ice in the NHL. Continuing our long-standing collaboration with architect Populous and general contractor Mortenson – which temporarily supported and successfully preserved the 44-million-pound original roof due to the building’s historic classification – Sightline Commercial Solutions engineered more than 18,000 linear feet of custom railing, including drink rail, picket rail, glass guardrail and LED handrail, for this first-of-its-kind venue. Fans seated in one of the 59 luxury suites can utilize the attached drink rail to enjoy refreshments with an exclusive view, while glass divider rails help to create an intimate atmosphere for each of these areas. Providing a nearly invisible look around the facility is 1/2” PVB and 3/4” SGP clear glass infill panels and glass FOB rail integrated with ribbon board to optimize sightlines for avid supporters. Additionally, custom extrusion post LED picket rails with steel balusters guide navigation, enhancing the ambiance and safety of the eco-centric environment.



We elevate places where experiences happen by providing innovative engineering, fabrication, and installation solutions to the most complex challenges. Discover our unconventional approach.