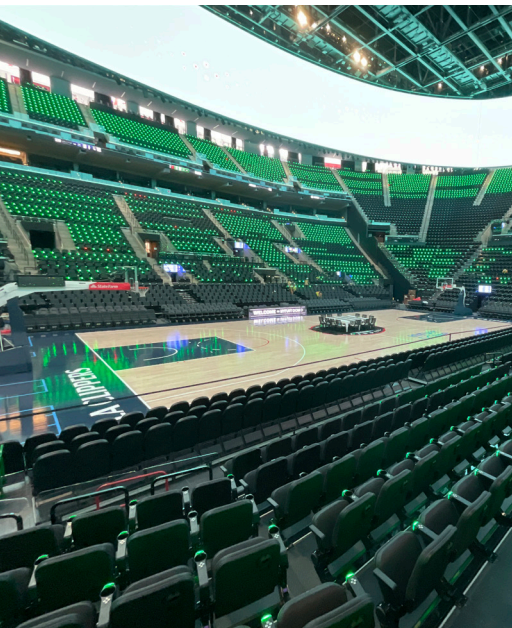


# Intuit Dome

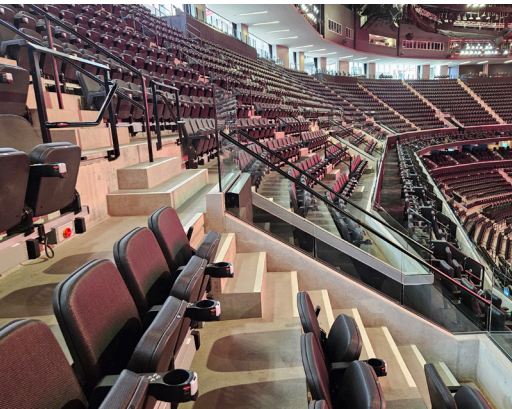
## Basketball Arena

**Project:** Intuit Dome  
**Architect:** AECOM, Hood and Anderson Barker  
**Contractor:** AECOM, Hunt and Turner JV  
**Scope:**

**Location:** Englewood, CA  
**Completion:** August 2024



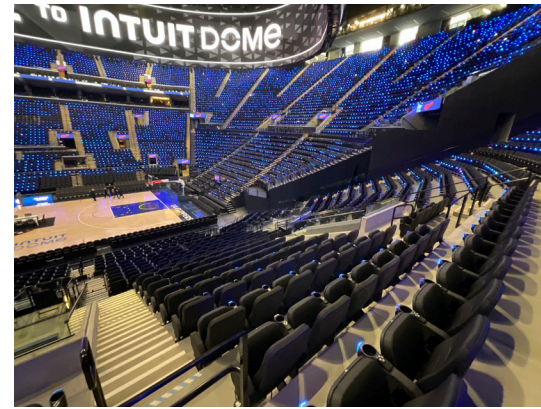
After decades of sharing space with the Los Angeles Lakers, the NBA's LA Clippers now have a home of their own at the new Intuit Dome in Inglewood, California. Defined by its nearly acre-sized scoreboard, the largest double-sided halo display in an arena setting, Intuit Dome delivers one of the most intensive live experiences in sports. Sightline Commercial Solutions played a pivotal role in ensuring that this \$2 billion, state-of-the-art arena would be a symbol and celebration of the Clippers' newfound independence. Utilizing innovative 3D laser scanning capabilities to accurately model the unique geometries of the arena, Sightline contributed more than 17,000 linear feet of custom engineered railing to create a safe and elevated environment. The integration of glass Track Rail, painted steel railing with stainless mesh infill, Point™ supported glass railing and custom-patterned etched glass ensured a sleek and modern aesthetic throughout the arena and its concourses while providing unobstructed sightlines for the Dome's 18,000 spectators. Additionally, powder-coated aluminum handrails, stainless-steel LED handrails and diagonal picket handrails in high-traffic areas enhance safety and ease-of-access for the many events on the Dome's busy schedule, which includes hosting basketball during the 2028 Summer Olympics. Sightline's custom railings helped to shape the Dome into a cutting-edge venue that redefines the fan experience, combining comfort, connectivity and modern design in every aspect.



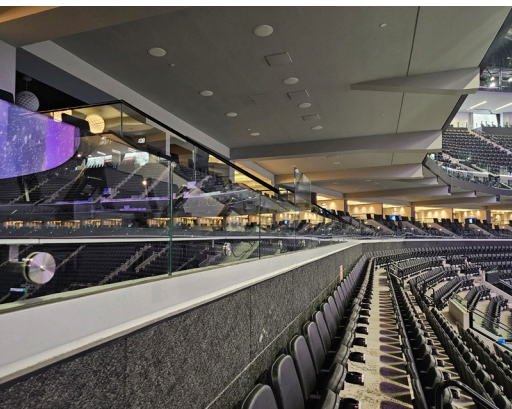
3D laser scanning capabilities to accurately model the unique geometries of the arena.



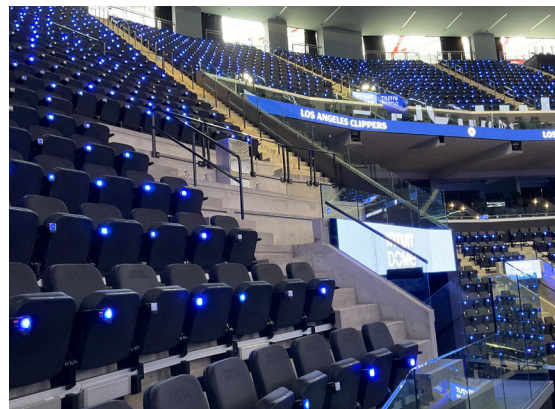
Point™ supported glass railing and custom-patterned etched glass ensured a sleek and modern aesthetic.



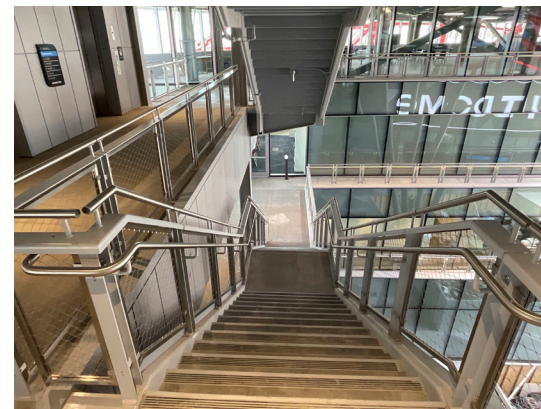
Unobstructed sightlines for the Dome's 18,000 spectators.



17,000 linear feet of custom engineered railing to create a safe and elevated environment.



Glass Track Rail provides safety for fans.



Painted steel railing with stainless mesh infill.

We elevate places where experiences happen by providing innovative engineering, fabrication, and installation solutions to the most complex challenges. Discover our unconventional approach.