

BMO Stadium

Soccer Stadium

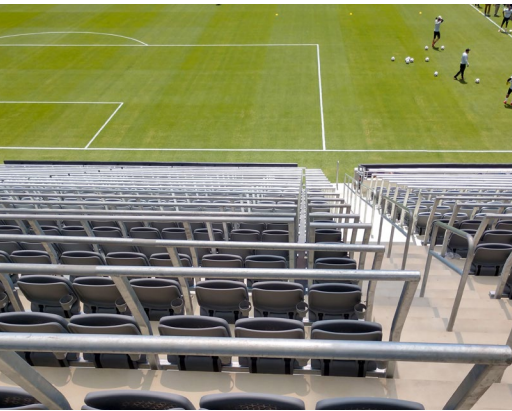


Project: BMO Stadium
Architect: Gensler Sports
Completion: April 2018

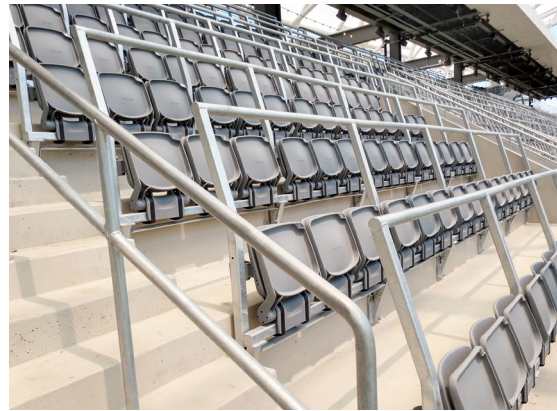
Location: Los Angeles, CA
Contractor: PCL Contracting

Scope:

Sightline Commercial Solutions teamed with the Los Angeles Football Club (LAFC) and architect Gensler Sports to design, engineer and manufacture the country's first safe standing supporter section with integrated seating, in addition to supplying safety and ornamental railing throughout the new 22,000-seat BMO Stadium. With the supporter experience at the forefront, this innovative design allows fans to stand shoulder-to-shoulder for an electric match-day environment, while also providing a comfortable seating option. Pitched at an unprecedented 34 degrees, the steepest rake in MLS, the section affords passionate supporters ample room – whether standing or sitting – so they can take in all the action on the field.



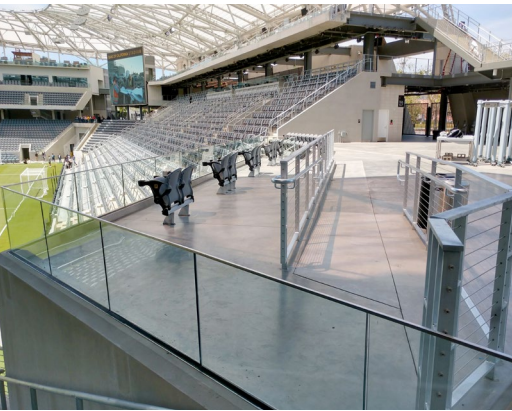
Factoring in the stadium's steep rake, the riser mounted metal railing frame angles back, creating a comfortable lean rail for standing supporters.



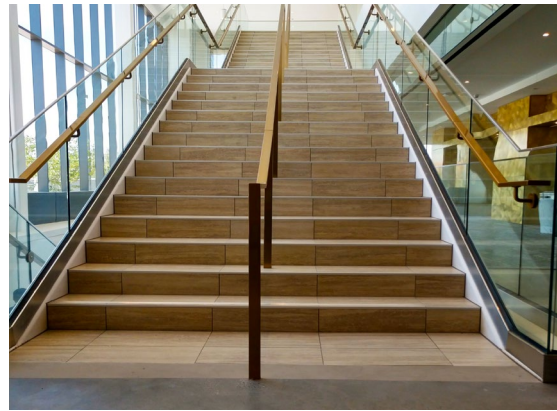
Lightweight, slim profile, lockable, tip-up style seats with formed seat and backrest maximize comfort, standing room and fan safety.



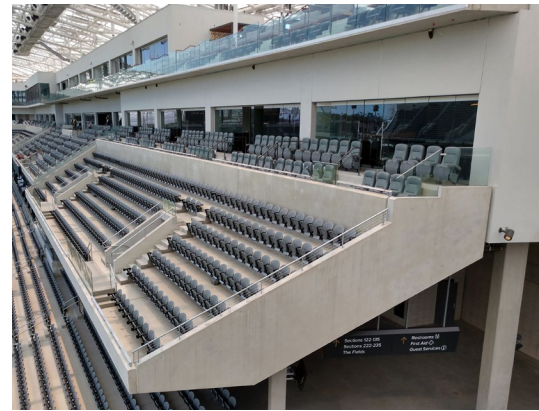
Split panels of Mist Fog Glass set within the Track Rail™ system allow for transparency from both sides to optimize views from The Directors Box.



ADA compliant glass and cable rail with steel framing enhance the safety and aesthetics of the stadium.



Powder coated flat bar handrails finished in Transparent Brass Glitter lend luxury and support to the VIP stairs.



A total of 18,625 linear feet of Sightline Commercial Solutions railing is installed throughout the 22,000 seat BMO Stadium.

We elevate places where experiences happen by providing innovative engineering, fabrication, and installation solutions to the most complex challenges. Discover our unconventional approach.